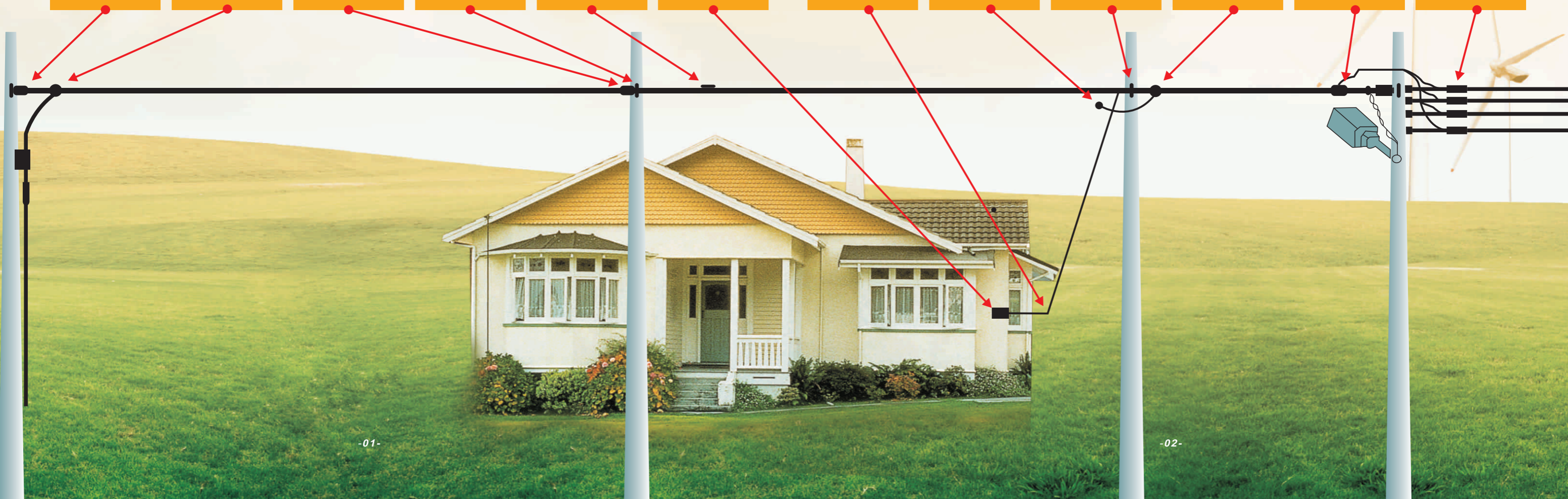


A

AERIAL ELECTRICAL FITTINGS



APDM630–Single phase switch for NH fuses up to 630A

General Description

The APDM630 fuse switch it is used either as an operation or protection device for LV lines. It is designed to be used with NH 1-2 or 3 size fuses offering a maximum of 630 Amps of line protection without blades. In case blades are used, the maximum switching load would be 800 Amps. It is manufactured in reinforced fiberglass polyamide and fulfills all the necessary requirements for outdoor installation and operation. In the APDM 160C model the connection is made with connectors suitable for aluminum and copper conductors with a section range between 16 and 95 mm² (5-4/0 AWG). The closure of the cap allows the switch to be closed with or without a fuse, preventing the risk of leaving tension parts exposed. It may also be provided with a light emission diode (LED).

Features included

The switch fuse 160 APR has the following features included:

- indicator light fuse operation
- installed fuse indicator
- Sealable Safety
- inserts for mounting bipolar, tripolar, tetrapolar etc..
- eyelets suitable for proper and safe opening and closing operation,
- assembly and disassembly of the cover

Technical characteristics

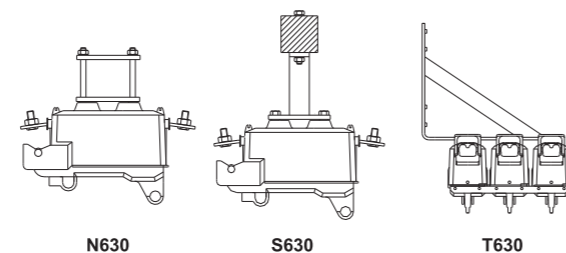
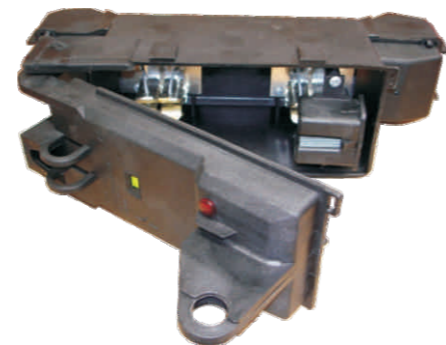
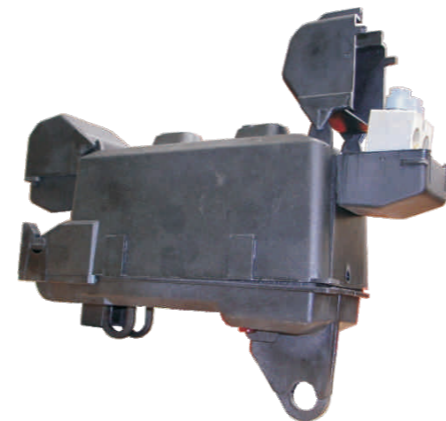
(IEC60947)

Voltage	500 V
Insulation level	1000 V
Frequency	50/60 Hz
Operational current with fuses	630 A
with blades	800 A
Installation category	AC 22B
Short time current (1s)	12 KA
Dinamic current (crest)	50 KA
Interruption capacity	100 KA
Weigth	1.8 kg
Protection degree	IP 24

Optionals:

APDM- ① ② -630 ③ ④ ⑤ ⑥ ⑦ ⑧ ⑨ ⑩

- ① 2-bipolar mounting 3-tripolar mounting 4-tetrapolar mounting
- ② 2-bipolar operation 3-tripolar operation 4-tetrapolar operation
- ③ C-connectors
- ④ Y-simple-double D-double-double
- ⑤ R-pole vault screw maneuver L-extreme cold maneuver
- ⑥ H-connection seal
- ⑦ P-protector cover
- ⑧ K-arc chamber
- ⑨ X-Stainless steel bolts
- ⑩ N-unipolar wood support included S-unipolar cement support included



N630

S630

T630

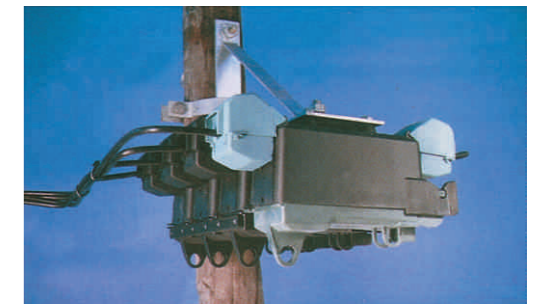
APDM630–3–Four phase switch for NH fuses up to 630A, with three phase operation

General Description

This model is suitable for switching and protecting LV overhead lines, and/or to include a protection when doing a connection to low voltage underground systems. The design of this equipment allows the opening and closing of the three phases simultaneously and independently from the neutral, which is clearly identified to prevent its disconnection in rigidly landed systems. If required, it can be easily transformed in a single phase operation switch as the standard model APDM 400. It can be connected with terminals lugs (APDM630-3) or directly with its connectors (APDM400-3C).

Each phase and the neutral have an indicator which show if the fuse or the blade are installed. The closure of the cap allows the switch to be closed with or without the fuse preventing the risk of leaving live parts exposed.

It can also be provided with a led to show the fusion of the fuses.



Technical Characteristics

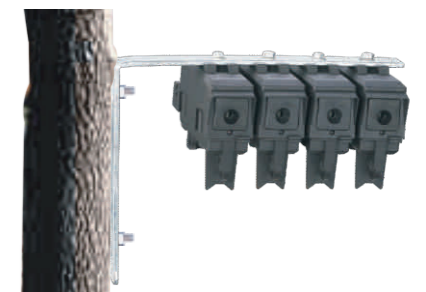
Voltage	500V
Insulation level	1000V
Frequency	50/60Hz
Operational current with fuses	400A
Operational current with blades	600A
Installation category	AC22
Short lasting Current(1s)	8KA
Dynamic current(crest)	50KA
Interruption capacity	100KA
Operations behavior without load(oper)	800
Operations behavior(operation) (400 A Cos fi 0,65)	200
Weight	1.8kg
Protection range	IP 23



APDM160



APDM630



APDM400T switch for NH fuses up to 400A

General Description

This model is suitable for switching and protecting LV overhead lines, and/or to include a protection when doing a connection to low voltage underground systems. The design of this equipment allows the opening and closing of the three phases simultaneously and independently from the neutral, which is clearly identified to prevent its disconnection in rigidly landed systems. If required, it can be easily transformed in a single phase operation switch as the standard model APDM 400T. It can be connected with terminals lugs (APDM400T-3) or directly with its connectors (APDM400T-3C).

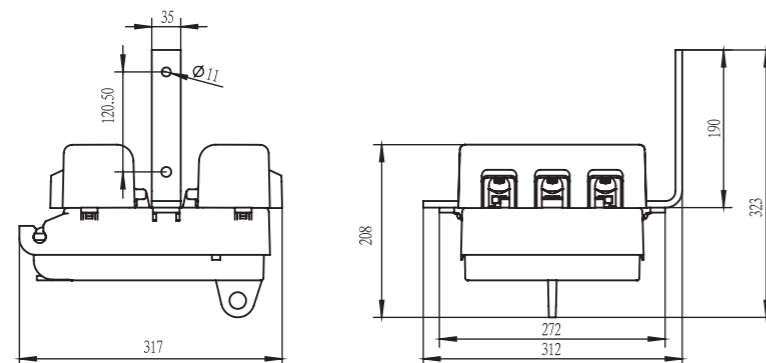
Each phase and the neutral have an indicator which show if the fuse or the blade are installed. The closure of the cap allows the switch to be closed with or without the fuse preventing the risk of leaving live parts exposed.

It can also be provided with a led to show the fusion of the fuses.



Technical Characteristics

Voltage	500V
Insulation level	1000V
Frequency	50/60Hz
Operational current with fuses	400A
Operational current with blades	400A
Installation category	AC22
Rated making and breaking capacity	1200A
Dynamic current(crest)	50KA
Rated conditional short-circuit current(rms)	80KA
Rated impulse withstand voltage(Uimp)	12KV
Operations behavior without load(oper)	800
Operations behavior(operation) (400 A Cos fi 0,65)	200
Weight	4kg
Protection range	IP 24



Overhead Distribution
Fuse Service Equipment

- Designed for IP43 rating and performance compliance with BS7656: 1993

Standart model: SMF-1

Note: Fuselink not included

This version can be pole, cross arm or wall mounted, its compact size allowing optimised arrangements resulting in less obtrusive installations.

Mechanical terminals with shear head bolts replace the studs usually associated with this type of cutout, eliminating the need for additional connecting lugs and specialised tools to ensure a simple, safe and effective joint.

The terminals will accept solid or stranded aluminium and solid copper conductors in the range 70 to 300mm². An adaptor is available for 25/35mm² copper or aluminium conductors.

The fuse carrier accepts 'J' type fuselinks to BS88 rated up to 400A.

With the PVC cable sealing grommets in place, the cutout is IP43 rated and has been designed to fully comply with the performance requirements specified in BS7656: 1993 for LV pole mounting fuses.

The enclosure is moulded in our own high performance, glass reinforced polyester, renowned and proven worldwide.



- Compact design for optimised mounting arrangements.
- Mechanical terminals require no additional lugs.
- Shear bolts-needs no special tools.
- Accepts aluminium and copper conductors between 70 and 300mm²

Fuselinks

This fused Cutout is designed to accommodate standard wedge "J" type fuselinks to BS 88 with 82 mm fixing centres.

Standard fuselink ratings range from 20 to 400A

Overhead Distribution

Fuse Service Equipment

Pole Mounted Cutouts

Rated at 400A

Standart model: SMF-2

Our industry standard unit is a very popular model.

Designed with ease of use and simplicity in mind, this pole mountable fused cutout is the ideal method of providing rural dwellings with a safe protected and reliable Low Voltage power supply.

Manufactured from our own track-resistant grade of Glass Reinforced Polyester, this fused Cutout is unobtrusive in appearance, but robust for outdoor applications.

Each fused Cutout includes M12 captive studs with nuts and washers for the reception of cable sockets (lugs) up to 300mm (compression type only) with copper or aluminium conductors.

For ease of mounting to either a wall or a wooden pole, the fused cutout is supplied with an M12 coach screw.

- Robust and tough design using our own formulation of DMC.
- Slide fit front cover for ease of jointing.
- “Easy fit” studs accept cable sockets (lugs) up to 300mm
- Designed to accept standard “J” type fuselinks
- Fully compliant with the requirements of BS 7656:1993
- Fully meeting the design criteria of IP43



Fuselinks

This fused Cutout is designed to accommodate standard wedge “J” type fuselinks to BS 88 with 82 mm fixing centres.

Standard fuselink ratings range from 20 to 400A

Note: Fuselink not included

Product Selection Chart



The SMF-3, Industry-Standard design, 400A rated fused Cut-out is one of our best selling products.

Designed with ease of use and simplicity in mind, this pole mountable fused Cut-out is the ideal method of providing rural dwellings with a safe, protected and reliable Low Voltage power supply.

Manufactured from our own track resistant grade of Glass Re-inforced Polyester, this fused Cut-out is unobtrusive in appearance and vandal resistant, when compared to many of the more traditional materials such as porcelain.

Each fused Cut-out has fuse contacts and cable terminal plates which are manufactured from copper and bright tinned. These plates incorporate M12 captive studs with nuts and washers for the reception of cable sockets (lugs) up to 300mm² (*compression type only at 300mm²) with copper or aluminium conductors.

For ease of mounting to either a wall or a wooden pole, the fused Cut-out is supplied with an M12 coach screw.

For cross-arm type mounting the Fused Cut-out can be supplied with an M12 nut, bolt and washer.

Technical Data

Modle	Fixing Arrangement
54611-18	400A Fused Cut-out for pole or wall mounting c/w M12 coach screw
54611-06	400A Fused Cut-out for cross-arm mounting c/w M12 bolt, nut and washer
58424-03	Spare fuse Carrier

Note:

Stepped washers recommended if lug palm has hole 16mm or greater.

Fuselinks

This fused Cut-out is designed to accommodate standard wedge type fuselinks to BS88 Part 5: 1988. Tested and approved for category of duty 415AC80.

Fixing centre requirement is 82mm.

Standard fuselink ratings range from 20 to 400A.