

AERIAL ELECTRICAL FITTINGS



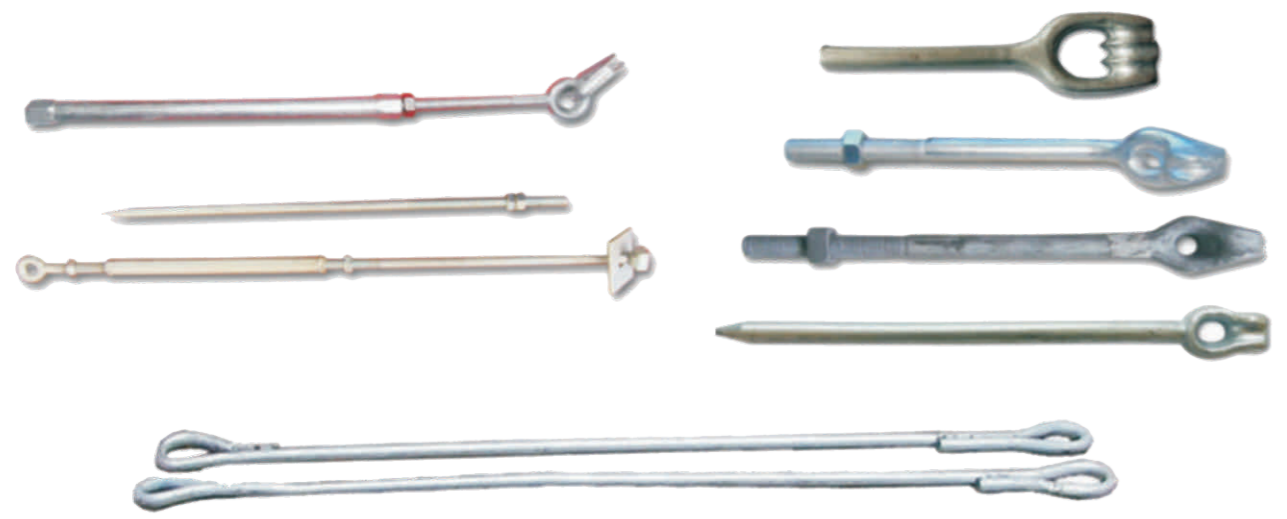
Hook



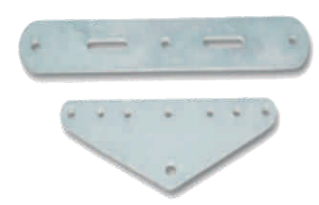
U Bolts



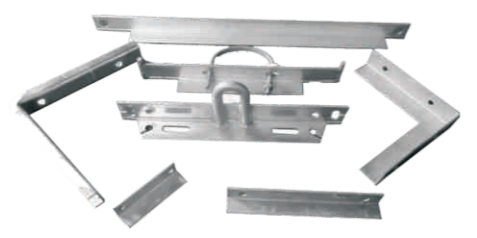
Rigging



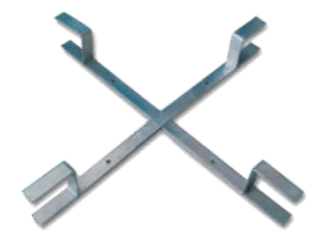
Stay Rod



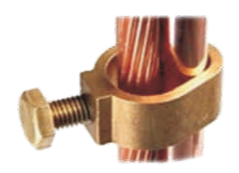
Clevis



Cross Arm



Earth Rod



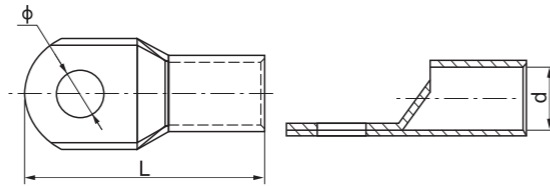
B

CABLE AND WIRE TERMINALS

Cable lug



JM(JGK)



Material: E-Cu
 Surface treatment: Tin-plated
 Product Property: It is used to connect the copper conductor end.
 It has a viewing window to check the conductor location.

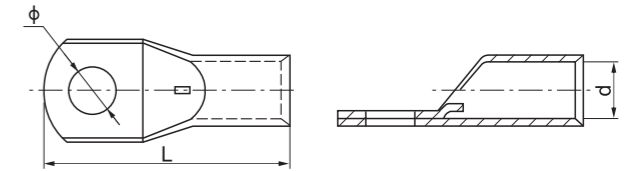
Modle	Dimensions(mm)		
	L	d	φ
JM(JGK) 1.5-4	18	1.9	4.2
JM(JGK) 1.5-5	18	1.9	5.2
JM(JGK) 1.5-6	18	1.9	6.5
JM(JGK) 2.5-4	19	2.8	4.3
JM(JGK) 2.5-5	20	2.8	5.2
JM(JGK) 2.5-6	20	2.6	6.5
JM(JGK) 4-4	19.5	3.2	4.3
JM(JGK) 4-5	20.5	3.2	5.2
JM(JGK) 4-6	22	3.2	6.5
JM(JGK) 6-5	22	3.7	5.2
JM(JGK) 6-6	23	3.7	6.5
JM(JGK) 6-8	24	3.7	8.4
JM(JGK) 6-10	24	3.7	10.3
JM(JGK) 10-6	24	4.5	6.5
JM(JGK) 10-8	25	4.5	8.4
JM(JGK) 10-10	26.5	4.5	10.3
JM(JGK) 16-6	27.5	5.7	6.5
JM(JGK) 16-8	29.5	5.7	8.4
JM(JGK) 16-10	30	5.7	10.5
JM(JGK) 25-6	32.5	7.2	6.5
JM(JGK) 25-8	33	7.2	8.4
JM(JGK) 25-10	34	7.2	10.5
JM(JGK) 25-12	37	7.2	13
JM(JGK) 35-6	36	8.5	6.5
JM(JGK) 35-8	37	8.5	8.5
JM(JGK) 35-10	38	8.5	10.5
JM(JGK) 35-12	38	8.5	13
JM(JGK) 50-6	41	9.8	6.5
JM(JGK) 50-8	42.5	9.8	8.5
JM(JGK) 50-10	44	9.8	10.5
JM(JGK) 50-12	44	9.8	13
JM(JGK) 50-14	44	9.8	14.7
JM(JGK) 70-8	48.5	11.5	8.5
JM(JGK) 70-10	50	11.5	10.5
JM(JGK) 70-12	50	11.5	13
JM(JGK) 95-8	57	13.7	8.5
JM(JGK) 95-10	57	13.7	10.5
JM(JGK) 95-12	57	13.7	13
JM(JGK) 95-14	57	13.7	15
JM(JGK) 95-16	57	13.7	17

Modle	Dimensions(mm)		
	L	d	φ
JM(JGK) 120-10	61.5	15	10.5
JM(JGK) 120-12	63	15	13
JM(JGK) 120-14	63	15	14.7
JM(JGK) 120-16	63.5	15	17
JM(JGK) 120-20	67.5	15	21
JM(JGK) 150-10	71	16.7	10.5
JM(JGK) 150-12	71	16.7	13
JM(JGK) 150-14	71	16.7	14.7
JM(JGK) 150-16	71	16.7	17
JM(JGK) 185-10	77	19.2	10.5
JM(JGK) 185-12	77	19.2	13
JM(JGK) 185-14	77.5	19.2	14.7
JM(JGK) 185-16	79	19.2	17
JM(JGK) 185-18	79	19.2	18.7
JM(JGK) 185-20	79	19.2	21
JM(JGK) 240-10	89.5	21	10.5
JM(JGK) 240-12	89.5	21	13
JM(JGK) 240-14	90	21	14.7
JM(JGK) 240-16	91	21	17
JM(JGK) 240-20	92	21	21
JM(JGK) 300-10	100	24	10.5
JM(JGK) 300-12	100	24	13
JM(JGK) 300-16	100	24	17
JM(JGK) 300-20	102	24	21
JM(JGK) 400-12	111	27	13
JM(JGK) 400-16	111	27	17
JM(JGK) 400-18	113	27	18.5
JM(JGK) 400-20	113	27	21
JM(JGK) 500-16	123	30	17
JM(JGK) 500-20	123	30	21
JM(JGK) 630-16	135	35	17
JM(JGK) 630-20	135	35	21
JM(JGK) 630-22	135	35	23
JM(JGK) 630-8/4	135	35	8.5
JM(JGK) 630-10/4	135	35	10.5
JM(JGK) 800-20	170	39	21
JM(JGK) 800-22	170	39	23
JM(JGK) 1000-20	200	44	21
JM(JGK) 1000-22	200	44	23

Cable lug



JM(JGY)



Material: E-Cu
 Surface treatment: Tin-plated
 Product Property: It is used to connect the copper conductor end.
 It has a viewing window to check the conductor location.

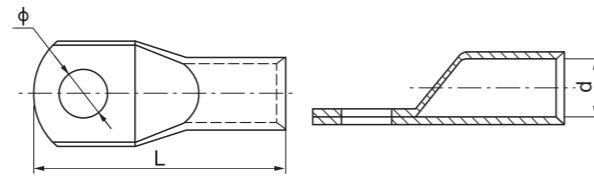
Modle	Dimensions(mm)		
	L	d	φ
JM(JGY) 6-5	25	3.7	5.2
JM(JGY) 6-6	25	3.7	6.5
JM(JGY) 6-8	25	3.7	8.4
JM(JGY) 10-5	26	4.5	5.3
JM(JGY) 10-6	26	4.5	6.5
JM(JGY) 10-8	26	4.5	8.4
JM(JGY) 10-10	28	4.5	10.3
JM(JGY) 16-6	28.5	5.7	6.5
JM(JGY) 16-8	30.5	5.7	8.4
JM(JGY) 16-10	31	5.7	10.5
JM(JGY) 25-6	35	7.2	6.5
JM(JGY) 25-8	35	7.2	8.4
JM(JGY) 25-10	35	7.2	10.5
JM(JGY) 35-6	37.5	8.5	6.5
JM(JGY) 35-8	38	8.5	8.5
JM(JGY) 35-10	39	8.5	10.5
JM(JGY) 35-12	39	8.5	13
JM(JGY) 50-6	43.5	9.8	6.5
JM(JGY) 50-8	45	9.8	8.5
JM(JGY) 50-10	45	9.8	10.5
JM(JGY) 50-12	45	9.8	13
JM(JGY) 50-14	45	9.8	14.5
JM(JGY) 70-8	50	11.5	8.5
JM(JGY) 70-10	51.5	11.5	10.5
JM(JGY) 70-12	51.5	11.5	13
JM(JGY) 95-8	58.5	13.7	8.5
JM(JGY) 95-10	58.5	13.7	10.5
JM(JGY) 95-12	58.5	13.7	13
JM(JGY) 95-14	59	13.7	15

Modle	Dimensions(mm)		
	L	d	φ
JM(JGY) 120-10	63.5	15	10.5
JM(JGY) 120-12	65	15	13
JM(JGY) 120-14	65	15	14.7
JM(JGY) 120-16	66.5	15	17
JM(JGY) 150-10	73	16.7	10.5
JM(JGY) 150-12	73	16.7	13
JM(JGY) 150-14	73	16.7	14.7
JM(JGY) 150-16	73	16.7	17
JM(JGY) 185-10	80	19.2	10.5
JM(JGY) 185-12	80	19.2	13
JM(JGY) 185-14	80	19.2	14.7
JM(JGY) 185-16	80	19.2	17
JM(JGY) 240-12	92.5	21	13
JM(JGY) 240-14	92.5	21	14.7
JM(JGY) 240-16	92.5	21	17
JM(JGY) 240-20	94.5	21	21
JM(JGY) 300-12	102	24	13
JM(JGY) 300-16	102	24	17
JM(JGY) 300-20	105	24	21
JM(JGY) 400-16	114	27	17
JM(JGY) 400-20	116	27	21
JM(JGY) 500-16	127	30	17
JM(JGY) 500-20	127	30	21
JM(JGY) 630-16	140	35	17
JM(JGY) 630-20	140	35	21
JM(JGY) 630-22	140	35	23
JM(JGY) 800-22	170	39	23
JM(JGY) 1000-22	200	44	23

Cable lug



JM(JGA)



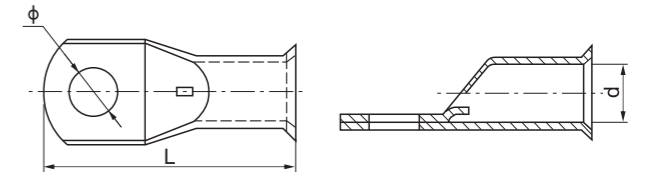
Material: E-Cu
 Surface treatment: Tin-plated
 Product Property: It is used to connect the copper conductor end.

Modle	Dimensions(mm)		
	L	d	φ
JM(JGA) 6-5	25	3.7	5.2
JM(JGA) 6-6	25	3.7	6.5
JM(JGA) 6-8	25	3.7	8.4
JM(JGA) 10-5	25	4.5	5.3
JM(JGA) 10-6	26	4.5	6.5
JM(JGA) 10-8	26	4.5	8.4
JM(JGA) 10-10	28	4.5	10.3
JM(JGA) 16-6	28.5	5.7	6.5
JM(JGA) 16-8	30.5	5.7	8.4
JM(JGA) 16-10	31	5.7	10.5
JM(JGA) 25-6	35	7.2	6.5
JM(JGA) 25-8	35	7.2	8.4
JM(JGA) 25-10	35	7.2	10.5
JM(JGA) 35-6	37.5	8.5	6.5
JM(JGA) 35-8	38	8.5	8.5
JM(JGA) 35-10	39	8.5	10.5
JM(JGA) 35-12	39	8.5	13
JM(JGA) 50-6	43.5	9.8	6.5
JM(JGA) 50-8	45	9.8	8.5
JM(JGA) 50-10	45	9.8	10.5
JM(JGA) 50-12	45	9.8	13
JM(JGA) 70-8	50	11.5	8.5
JM(JGA) 70-10	51.5	11.5	10.5
JM(JGA) 70-12	51.5	11.5	13
JM(JGA) 95-8	58.5	13.7	8.5
JM(JGA) 95-10	58.5	13.7	10.5
JM(JGA) 95-12	58.5	13.7	13
JM(JGA) 95-14	59	13.7	15
JM(JGA) 120-10	63.5	15	10.5
JM(JGA) 120-12	65	15	13

Cable lug



JM(JGB)



Material: E-Cu
 Surface treatment: Tin-plated
 Product Property: It is used to connect the copper conductor end. It has a viewing window to check the conductor location. And its bell mouth is specially designed to accommodate fine strand flexible conductors. Because fine stranded cables have a larger diameter than normal cables. And they tend to splay out after stripping, JGB lugs which funnel the strands into the lug and make conductor insert easily.

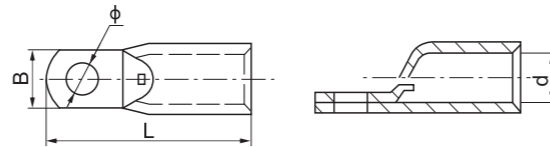
Modle	Dimensions(mm)		
	L	d	φ
JM(JGB) 6-5	25	3.7	5.2
JM(JGB) 6-6	25	3.7	6.5
JM(JGB) 6-8	25	3.7	8.4
JM(JGB) 10-6	26	4.5	6.5
JM(JGB) 10-8	26	4.5	8.4
JM(JGB) 10-10	28	4.5	10.3
JM(JGB) 16-6	28.5	5.7	6.5
JM(JGB) 16-8	30.5	5.7	8.4
JM(JGB) 16-10	31	5.7	10.5
JM(JGB) 25-6	33.5	7.2	6.5
JM(JGB) 25-8	35	7.2	8.4
JM(JGB) 25-10	35	7.2	10.5
JM(JGB) 35-6	37.5	8.5	6.5
JM(JGB) 35-8	38	8.5	8.5
JM(JGB) 35-10	39	8.5	10.5
JM(JGB) 35-12	39	8.5	13
JM(JGB) 50-6	43.5	9.8	6.5
JM(JGB) 50-8	45	9.8	8.5
JM(JGB) 50-10	45	9.8	10.5
JM(JGB) 50-12	45	9.8	13
JM(JGB) 70-8	50	11.5	8.5
JM(JGB) 70-10	51.5	11.5	10.5
JM(JGB) 70-12	51.5	11.5	13
JM(JGB) 95-10	58.5	13.7	10.5

Modle	Dimensions(mm)		
	L	d	φ
JM(JGB) 95-12	58.5	13.7	13
JM(JGB) 120-12	65	15	13
JM(JGB) 120-14	65	15	14.7
JM(JGB) 120-16	66.5	15	17
JM(JGB) 150-10	73	16.7	10.5
JM(JGB) 150-12	73	16.7	13
JM(JGB) 150-14	73	16.7	14.7
JM(JGB) 150-16	73	16.7	17
JM(JGB) 185-12	80	19.2	13
JM(JGB) 185-14	80	19.2	14.7
JM(JGB) 185-16	80	19.2	17
JM(JGB) 240-16	92.5	21	17
JM(JGB) 240-20	92.5	21	21
JM(JGB) 300-16	---	24	---
JM(JGB) 300-20	---	24	---
JM(JGB) 400-16	---	27	---
JM(JGB) 400-20	---	27	---
JM(JGB) 500-16	---	30	---
JM(JGB) 500-20	---	30	---
JM(JGB) 630-20	---	35	---
JM(JGB) 630-22	---	35	---
JM(JGB) 800-22	---	39	---
JM(JGB) 1000-22	---	44	---

Circuit breaker lug



TM



Material: E-Cu
 Surface treatment: Tin-plated mini 3 microns
 Product Property: For smaller contact area or space, such as a connection of MCCB, a narrow palm lug is required. TM is special designed for such a connection.

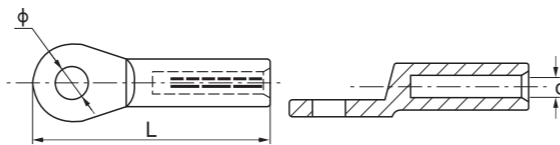
Modle	Dimensions(mm)			
	L	d	B	φ
TM 10-5	27	4.3	9	5.3
TM 16-5	31	5.6	9	5.3
TM 25-5	35	7	9	5.3
TM 35-6	40.5	8.4	11.5	6.4
TM 50-8	45.5	9.5	12.8	8.4
TM 70-8	49	11.2	12.8	8.4
TM 95-8	54	13.5	15.5	8.4
TM 120-8	68	15.6	19	8.4

Modle	Dimensions(mm)			
	L	d	B	φ
TM 120-10	68	15.6	19	10.5
TM 150-8	75	16.7	19	8.4
TM 150-10	75	16.7	19	10.5
TM 185-10	79	19	24.5	10.5
TM 240-10	86	21.1	29.8	10.5
TM 240-12	92	21.1	29.8	13.2
TM 240-16	100	21.1	29.8	17
TM 300-12	97	23.7	31	13.2

Din aluminium lug



AU



Material: A1-99.5%
 Surface treatment: Tin-plated mini 15 microns
 Product Property: It is in accordance with DIN 46329 with markings for correct crimping. And its barrel capped is filled with joint compound to avoid oxidization. And its type test is follow IEC 61238-1.

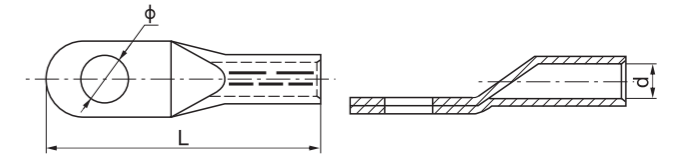
Modle	Dimensions(mm)		
	L	d	φ
AU 16-8	60	5.8	8.4
AU 25-8	61.5	6.8	8.4
AU 25-10	61.5	6.8	10.5
AU 35-10	77	8	10.5
AU 50-10	77	9.8	10.5
AU 50-12	77	9.8	13
AU 70-10	84.5	11.2	10.5
AU 95-12	88	13.2	13

Modle	Dimensions(mm)		
	L	d	φ
AU 120-12	95	14.7	13
AU 150-12	105	16.3	13
AU 150-16	105	16.3	17
AU 185-12	106	18.3	13
AU 185-16	106	18.3	17
AU 240-12	122	21	13
AU 240-16	122	21	17
AU 300-16	123	23.3	17

Din cable lug



AUS



Material: E-Cu
 Surface treatment: Tin-plated mini 8 microns
 Product Property: It is used to connect the copper conductor end. Application up to 33kv. It is in accordance with DIN46235 with markings for correct crimping. And its type test is follow IEC 61238-1.

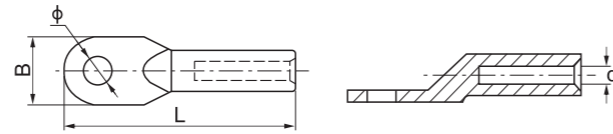
Modle	Dimensions(mm)		
	L	d	φ
AUS 6-5	30.5	30.5	5.3
AUS 6-6	31.5	3.8	6.4
AUS 6-8	34	3.8	8.4
AUS 10-5	34	4.5	5.3
AUS 10-6	34.5	4.5	6.4
AUS 10-8	37	4.5	8.4
AUS 16-6	43.5	5.5	6.4
AUS 16-8	46	5.5	8.4
AUS 16-10	48	5.5	10.5
AUS 16-12	49	5.5	13
AUS 25-6	45.5	7	6.4
AUS 25-8	48	7	8.4
AUS 25-10	50	7	10.5
AUS 25-12	51	7	13
AUS 35-6	49.5	8.4	6.4
AUS 35-8	52	8.4	8.4
AUS 35-10	54	8.4	10.5
AUS 35-12	55	8.4	13
AUS 35-14	56.5	8.2	15
AUS 50-8	62	10	8.4
AUS 50-10	64	10	10.5
AUS 50-12	65	10	13
AUS 50-14	66.5	10	15
AUS 50-16	68	10	17
AUS 70-8	65	11.5	8.4
AUS 70-10	67	11.5	10.5
AUS 70-12	68	11.5	13
AUS 70-14	69.5	11.5	15
AUS 70-16	71	11.5	17
AUS 95-8	77	13.5	8.4
AUS 95-10	77	13.5	10.5
AUS 95-12	78	13.5	13
AUS 95-14	79.5	13.5	15
AUS 95-16	81	13.5	17

Modle	Dimensions(mm)		
	L	d	φ
AUS 120-10	85	15.5	10.5
AUS 120-12	86	15.5	13
AUS 120-14	88	15.5	15
AUS 120-16	89	15.5	17
AUS 120-20	91	15.5	21
AUS 150-10	93	17	10.5
AUS 150-12	94	17	13
AUS 150-14	97	17	15
AUS 150-16	97	17	17
AUS 150-20	99	17	21
AUS 185-10	97	19	10.5
AUS 185-12	98	19	13
AUS 185-14	101	19	15
AUS 185-16	101	19	17
AUS 185-20	103	19	21
AUS 240-12	108	21.5	13
AUS 240-14	111	21.5	15
AUS 240-16	111	21.5	17
AUS 240-20	113	21.5	21
AUS 300-14	119	24.5	15
AUS 300-16	119	24.5	17
AUS 300-20	122	24.5	21
AUS 400-14	140	27.5	15
AUS 400-16	140	27.5	17
AUS 400-20	140	27.5	21
AUS 500-16	150	31	17
AUS 500-20	150	31	21
AUS 630-16	160	34.5	17
AUS 630-20	160	34.5	21
AUS 800-16	195	40	17
AUS 800-20	195	40	21
AUS 1000-16	195	44	17
AUS 1000-20	195	44	21

Cable lug



DT



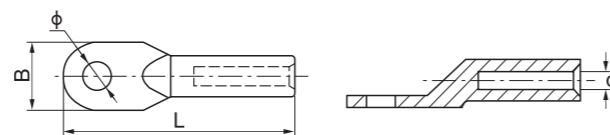
Material: E-Cu
 Surface treatment: Bright
 Product Property: It is used to connect the copper conductor end.

Modle	Dimensions(mm)			
	L	d	B	φ
DT 10-6	59	4.7	13.5	6.5
DT 16-8	67	5.7	16	8.5
DT 25-8	70	7.2	17.5	8.5
DT 35-10	78	8.5	20	10.5
DT 50-10	87	9.7	23	10.5
DT 70-12	95	11.5	26	12.5
DT 95-12	105	13.5	28	12.5
DT 120-14	112	15	31	14.5
DT 150-14	116	16.5	35	14.5
DT 185-16	125	18.5	37.5	17
DT 240-16	134	21	40	17
DT 300-18	150	23.5	44.5	18.5
DT 400-20	160	26.5	50	21

Aluminium lug



DL

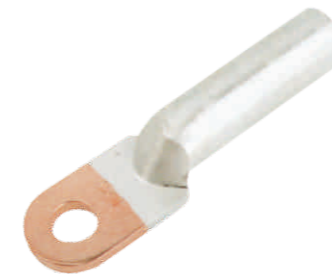


Material: A1-99.5%
 Surface treatment: Bright
 Products property: It is used to connect the aluminum conductor end.

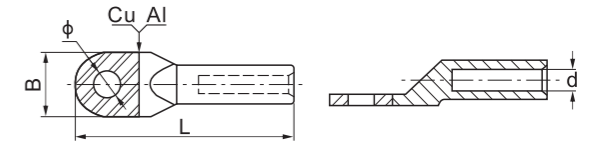
Modle	Dimensions(mm)			
	L	d	B	φ
DL 16-6	70	5.8	16	6.5
DL 16-8	70	5.8	16	8.5
DL 25-8	75	7.2	17.5	8.5
DL 35-8	85	8.5	20	8.5
DL 35-10	85	8.5	20	10.5
DL 50-10	90	9.7	23	10.5
DL 70-12	100	11.5	26	12.5
DL 95-12	110	13.5	28	12.5

Modle	Dimensions(mm)			
	L	d	B	φ
DL 120-14	120	15	31	14.5
DL 150-14	125	16.5	35	14.5
DL 150-16	125	16.5	35	17
DL 185-16	133	18.5	37.5	17
DL 240-16	140	21	40	17
DL 300-18	160	23.5	44.5	18.5
DL 300-20	160	23.5	44.5	21

Bimetal lug



DTL



Material: E-Cu; A1-99.6%
 Surface treatment: Bright
 Products property: Due to the coupling effect when Aluminium comes in contact with Copper, corrosion will happen in a short time. Currently the best solution is to use Aluminium-Copper bimetal connectors. A bimetal lug should be used for termination. The friction welding is well done. And its barrel capped is filled with joint compound to avoid oxidization.

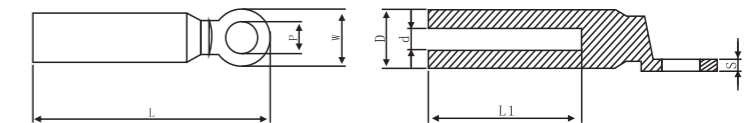
Modle	Dimensions(mm)			
	L	d	B	φ
DTL 10-6	62	4.8	13.5	6.5
DTL 16-8	70	5.8	16	8.5
DTL 25-8	75	7.2	17.5	8.5
DTL 35-10	85	8.5	20	10.5
DTL 50-10	90	9.7	23	10.5
DTL 70-12	102	11.5	26	12.5
DTL 95-12	112	13.5	28	12.5

Modle	Dimensions(mm)			
	L	d	B	φ
DTL 120-14	120	15	31	14.5
DTL 150-14	125	16.5	35	14.5
DTL 185-16	133	18.5	37.5	17
DTL 240-16	140	21	40	17
DTL 300-18	160	23.5	44.5	18.5
DTL 400-20	170	27	50	21
DTL 500-20	225	29	60	21

Bimetal lug a type



DTL-2



Material: E-Cu; A1-99.6%
 Surface treatment: Bright
 Products property: Due to the coupling effect when Aluminium comes in contact with Copper, corrosion will happen in a short time. Currently the best solution is to use Aluminium-Copper bi-metal connectors. A bimetal lug should be used for termination. The friction welding is well done. And its barrel capped is filled with joint compound to avoid oxidization. The type test is follow IEC 61238-1.

Type A(mm)	Dimensions(mm)						
	P±0.3	D±0.5	d±0.3	L±3	L1±0.3	W±0.5	S±0.3
DTL-2-16-11	Φ11	Φ16	Φ6	80	40	Φ20	3
DTL-2-25-11	Φ11	Φ16	Φ7	80	40	Φ20	3
DTL-2-35-11	Φ11	Φ16	Φ8.5	80	40	Φ20	3
DTL-2-50-13	Φ13	Φ20	Φ10	90	43	Φ25	4.5
DTL-2-70-13	Φ13	Φ20	Φ11.5	90	43	Φ25	4.5
DTL-2-95-13	Φ13	Φ20	Φ13.5	90	43	Φ25	4.5
DTL-2-120-13	Φ13	Φ25	Φ15	115	59	Φ30	5.5
DTL-2-150-13	Φ13	Φ25	Φ16.5	115	59	Φ30	5.5

Type A(mm)	Dimensions(mm)						
	P±0.3	D±0.5	d±0.3	L±3	L1±0.3	W±0.5	S±0.3
DTL-2-185-13	Φ13	Φ32	Φ18.5	122	60	Φ30	6
DTL-2-240-13	Φ13	Φ32	Φ21	122	60	Φ35	6
DTL-2-300-13	Φ13	Φ34	Φ23.5	128	65	Φ35	6
DTL-2-400-17	Φ17	Φ40	Φ26	160	90	Φ36	6
DTL-2-500-17	Φ17	Φ40	Φ30	160	95	Φ36	6
DTL-2-630-17	Φ17	Φ47	Φ33.5	205	95	Φ60	10
DTL-2-800	Φ17	Φ60	Φ38.5	240	110	Φ80	10
DTL-2-1000	Φ17	Φ60	Φ43.5	240	110	Φ80	10

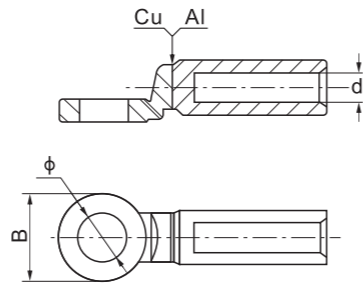
Bimetal lug b type



CAL-BS

Material: E-Cu; Al-99.6%
Surface treatment: Bright

Products property: Due to the coupling effect when Aluminium comes in contact with Copper, corrosion will happen in a short time. Currently the best solution is to use Aluminium-Copper bi-metal connectors. A bimetal lug should be used for termination. The friction welding is well done. And its barrel capped is filled with joint compound to avoid oxidization. The type test is follow IEC 61238-1. We are able to produce special bimetal lugs on request.



Modle	Dimensions(mm)		
	d	B	φ
CAL-16BS-10	5.6	20	10.5
CAL-25BS-10	6.5	20	10.5
CAL-35BS-10	8.5	20	10.5
CAL-50BS-12	9.5	24	12.8
CAL-70BS-12	11	24	12.8
CAL-95BS-12	12.5	24	12.8
CAL-120BS-12	13.7	30	12.8

Modle	Dimensions(mm)		
	d	B	φ
CAL-150BS-12	15.5	30	12.8
CAL-185BS-12	17	35	12.8
CAL-240BS-12	19.5	35	12.8
CAL-300BS-16	23.3	36	16.5
CAL-400BS-16	26	36	16.5
CAL-500BS-16	29	60	17
CAL-630BS-16	32.5	60	17

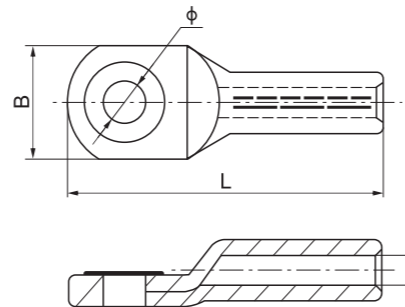
Bimetal lug



ATL

Material: E-Cu; Al-99.5%
Surface treatment: Bright

Products property: It is used for screwing non-tension aluminium connections using copper washers.



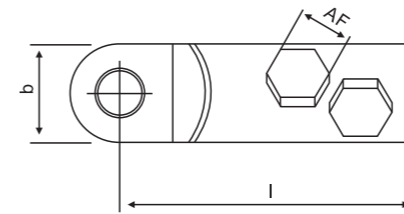
Modle	Dimensions(mm)			
	L	d	B	φ
ATL 10-6	63	5	18	6.5
ATL 10-8	63	5	22	8.5
ATL 16-8	63	5.8	22	8.5
ATL 16-10	65	5.8	25	10.5
ATL 25-8	71	6.8	22	8.5
ATL 25-10	73	6.8	25	10.5
ATL 25-12	73	6.8	27.5	13
ATL 35-8	79	8	22	8.5
ATL 35-10	80	8	26	10.5
ATL 35-12	82.5	8	30	13
ATL 50-8	84.5	9.8	25	8.5
ATL 50-10	86	9.8	27	10.5
ATL 50-12	87.5	9.8	30	13
ATL 70-8	98.5	11.2	28	8.5
ATL 70-10	100	11.2	29	10.5
ATL 70-12	102.5	11.2	32	13
ATL 95-10	106.5	13.2	32	10.5
ATL 95-12	106.5	13.2	35	13

Modle	Dimensions(mm)			
	L	d	B	φ
ATL 95-16	108.5	13.2	38	17
ATL 120-10	107.5	14.7	34	10.5
ATL 120-12	107.5	14.7	35	13
ATL 120-16	109.5	14.7	38	17
ATL 150-10	119	16.3	35	10.5
ATL 150-12	119	16.3	35	13
ATL 150-16	121.5	16.3	41	17
ATL 150-20	123	16.3	44	21
ATL 185-12	123.5	18.3	40	13
ATL 185-16	124.5	18.3	42	17
ATL 185-20	126	18.3	46	21
ATL 240-12	136	21	45	13
ATL 240-16	136	21	45	17
ATL 240-20	136	21	49	21
ATL 300-16	144	23.3	51	17
ATL 300-20	145	23.3	51	21
ATL 400-16	187	26	58	17
ATL 400-20	187	26	58	21

Mechanical Lugs and Connectors



AML



Characteristics:

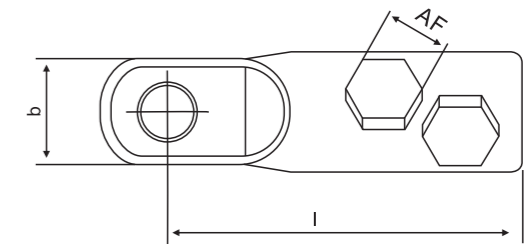
1. Total cross-section: 25-400 mm
2. Pr-engineered design for perfect fit in medium voltage cable accessories upto 42 kV.
3. Lugs are suitable for out door and indoor applications.
4. Connector and lug bodies are made of a high-tensile, tin plated aluminium alloy.
5. Lugs are suitable for outdoor and indoor applications and are available with different hole sizes.

Cable Size (mm ²)	Bolt Size	Code	Dimension (mm)			Bolt Quantity
			b	I	AF	
25-95	M-12	AML25/95-13	24	60	13	1
	M-16	AML25/95-17				
35-150	M-12	AML35/150-13	28	86	16	1
	M-16	AML35/150-17				
95-240	M-12	AML95/240-13	33	112	19	2
	M-16	AML95/240-17				
	M-20	AML95/240-21				
120-300	M-12	AML120/300-13	37	115	24	2
	M-16	AML120/300-17				
185-400	M-12	AML185/240-13	42	137	24	3
	M-16	AML185/240-17				
	M-20	AML185/240-21				

Mechanical Lugs and Connectors



AMO



Characteristics:

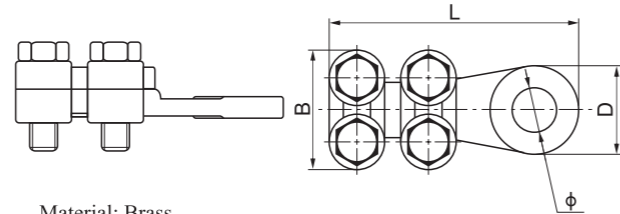
1. Total cross-section: 25-400 mm
2. Pre-engineered design for perfect fit in medium voltage cable accessories up to 42 kV.
3. Lugs are suitable for out door and indoor applications.
4. Connector and lug bodies are made of a high-tensile, tin plated aluminium alloy.
5. Use in cable accessories.

Cable Size(mm ²)	Size of Bolt	Code	Dimension (mm)			Bolt Quantity
			b	I	AF	
25-95	M16	AMO25/95-16	34	80	13	1
95-240	M16	AMO95/240-16	34	120	19	2
185-300	M16	AMO185/300-16	34	115	22	2
240-400	M16	AMO240/400-16	34	115	24	3

Bolted brass lug



WCJC



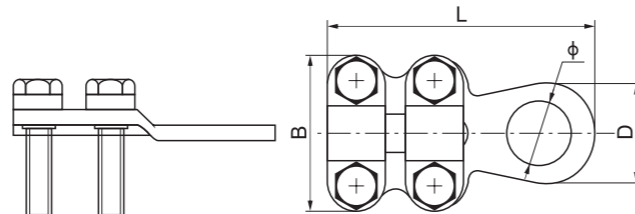
Material: Brass
 Surface treatment: Nickle plated
 Products property: It is fixed by bolts and used in the connections between the electrical equipment with cable and the indoor distribution equipment. They can be reused many times.

Modle	Dimensions(mm)			
	L	D	B	φ
WCJC 16-8	37	16	21.5	8
WCJC 25-35-10	48	22	23	11
WCJC 50-70-10	61	23	30	11
WCJC 70-95-12	66.5	27	33	13
WCJC 120-150-14	73	32	36	15
WCJC 185-240-16	91	39	46	17
WCJC 300-20	105	45.5	55	21
WCJC 400-22	122	50	60	23

Bolted copper lug



WCJB

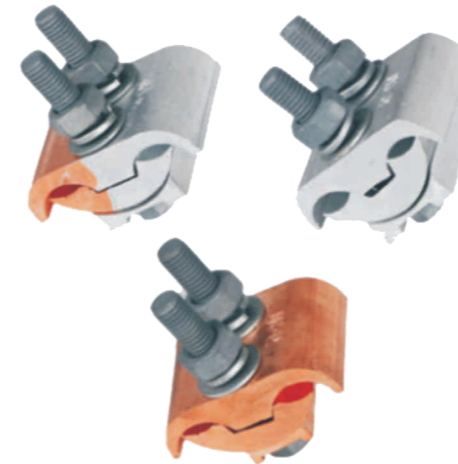


Material: E-Cu
 Surface treatment: Tin plated
 Products property: It is fixed by bolts and used in the connections between the electrical equipment with cable and the indoor distribution equipment. It can be reused many times.

Modle	Dimensions(mm)			
	L	d	B	φ
WCJB 6-10-6	31	15	18.5	6.5
WCJB 16-25-8	46	18.5	24	8.5
WCJB 25-35-10	53	21.5	24	10.5
WCJB 50-70-10	63	23.5	31	10.5
WCJB 70-95-12	69	24	34	13
WCJB 120-150-12	76	30	42	13
WCJB 120-150-16	76	30	42	17
WCJB 185-240-16	85.5	34	48.5	17
WCJB 185-240-20	88.5	36	48.5	21
WCJB 240-300-20	87	34.5	50.5	21

Span Parallel Groove Clamp(JBL、JBT、JBTL)(Equivalent Model:JBL)

Outline and installation dimension



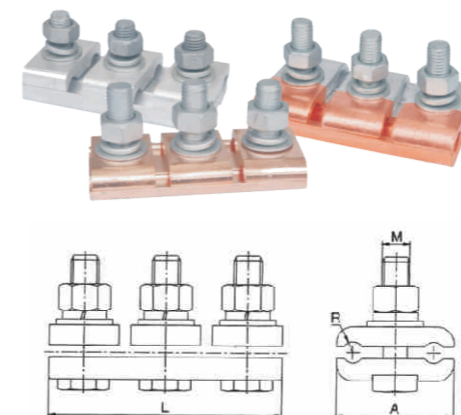
Note:

- The meaning of model letters and numbers in the table is: J means continuation, B stands for parallel groove, t stands for copper, I stands for aluminum, and no letter stands for aluminum, Q is brazing type;
- The additional number "2" or no additional number means two bolts, The number "3" indicates three bolts.

Model	Applicable Traverse Section(mm ²)
JBL-16-120/2	16-120
JBL-16-120/3	16-120
JBL-50-240/2	50-240
JBL-50-240/3	50-240
JBL-120-400/2	120-400
JBL-120-400/3	120-400
JBL-16-120(3)	35-120
JBL-95-300(3)	95-300
JBL-50-240(3)	50-240
JBL-16-120(2)	16-120
JBL-50-240	50-240
JBT-10-70	10-70
JBT-16-120	16-120
JBT-50-240	50-240
JBTL-10-70	10-70
JBTL-16-120	16-120
JBTL-50-240	50-240
JBTL-16-120Q	16-120
JBTL-50-120Q	50-240

JB/JBT/JBTL Series Copper parallel Groove Clamp

Outline and installation dimension



Model	Applicable Traverse Section(mm ²)	Bolt Quantity	Dimensions(mm)			
			M	D	B	A
JB/JBT/JBTL-0	16-25	12	12	22	7	50
JB/JBT/JBTL-1	35-50	14	14	26	7	50
JB/JBT/JBTL-2	70-95	16	16	26	7	50
JB/JBT/JBTL-3	120-150	18	18	30	8	60
JB/JBT/JBTL-4	185-240	20	20	30	8	60