

A

AERIAL ELECTRICAL FITTINGS



ANCHORING BRACKET



ANCHORING CLAMP



FUSE SWITCH DISCONNECTOR



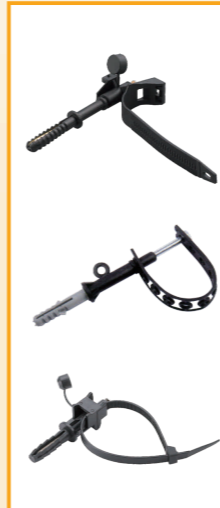
SUSPENSION CLAMP



PRE-INSULATED SLEEVE



PRE-INSULATED BIMETAL LUG



FIXING NAIL



ANCHORING CLAMP



FIXING STEEL BELT



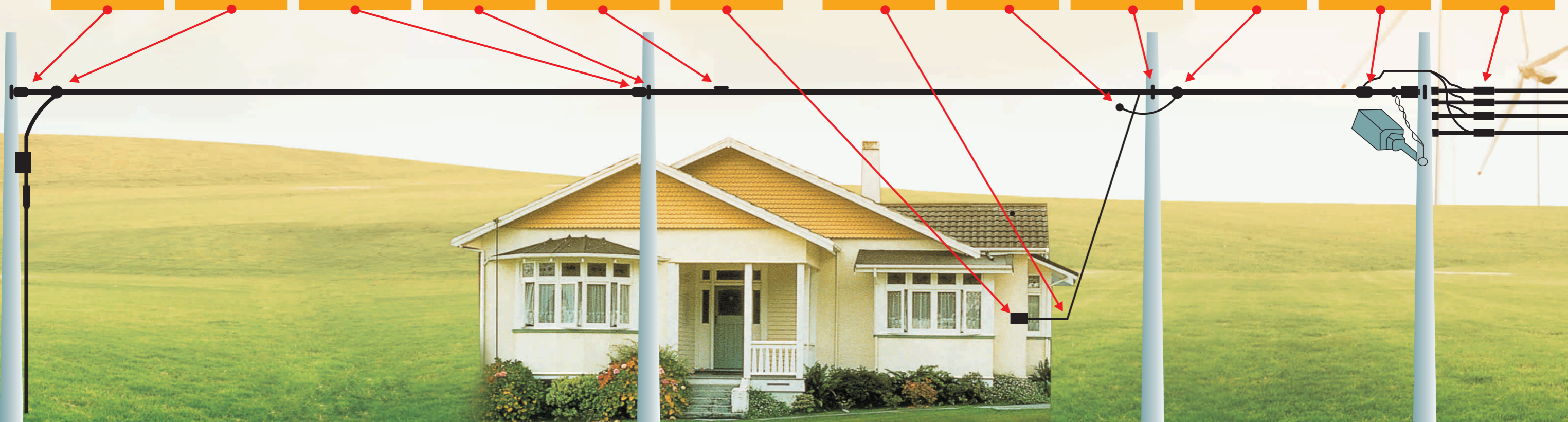
INSULATED PIERCING CONNECTOR



INSULATED PIERCING CONNECTOR (LIGHTING)

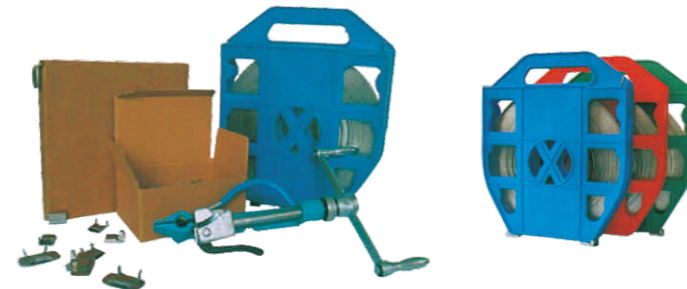


INSULATED PIERCING CONNECTOR (TRANSFORMATION)



Type 304 Stainless Steel Band

1. Band and buckle can be quickly formed to suit virtually any diameter.
2. Applications include hose clamps, pipes, signs, cables, especially where superior strength is required.
3. Dispensers-Handy plastic dispensers available with centre turn facility and pocket for buckles.
4. Excellent corrosion resistance.



Portable Dispensers

Type 304 Stainless Steel

Modle	Width		Thickness		Weight	
	Im.	mm	Im.	mm	lbs	kg
SMB1450	1/4	6.35	0.020	0.50	1.76	0.80
SMB3850	3/8	9.53	0.020	0.50	2.64	1.20
SMB1276	1/2	12.70	0.030	0.76	5.50	2.50
SMB5876	5/8	15.88	0.030	0.76	7.04	3.20
SMB3476	3/4	19.05	0.030	0.76	8.27	3.76

Available in mill coil lengths. All size in standard cardboard packing.

Type 304 Stainless Steel

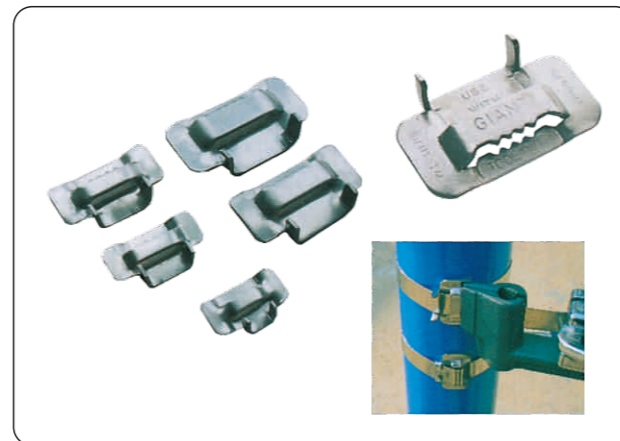
Modle	Width		Thickness		Weight	
	Im.	mm	Im.	mm	lbs	kg
SMBD3850	3/8	9.53	0.020	0.50	3.08	1.40
SMBD1276	1/2	12.70	0.030	0.76	5.94	2.70
SMBD5876	5/8	15.88	0.030	0.76	7.48	3.40
SMBD3476	3/4	19.05	0.030	0.76	8.71	3.96

Customers can assign different colors for different sizes.

Stainless Steel Buckle

Tooth type

Modle	For band width		Thickness
	Inch	mm	mm
SMBT14	1/4	6.35	0.8
SMBT38	3/8	9.53	1.0
SMBT12	1/2	12.70	1.2
SMBT58	5/8	15.88	1.2
SMBT34	3/4	19.05	1.5
SMBT1	1	25.40	1.8
SMBT114	1 1/4	32.50	2.0



L type

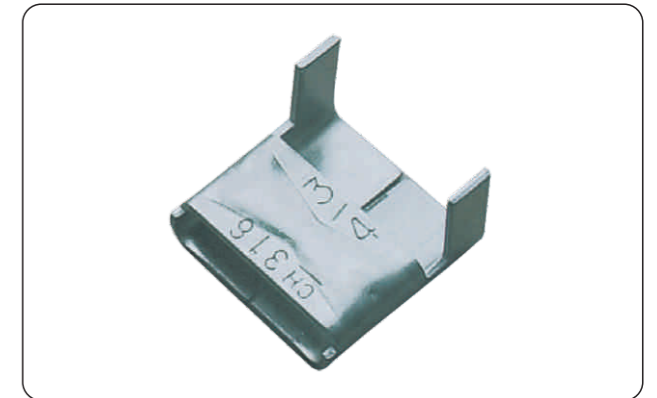
Modle	For band width		Thickness
	Inch	mm	mm
SMBL14	1/4	6.35	0.6
SMBL38	3/8	9.53	0.7
SMBL12	1/2	12.70	0.7
SMBL58	5/8	15.88	0.8
SMBL34	3/4	19.05	1.0



Stainless Steel Buckle

LX type

Modle	For band width		Thickness
	Inch	mm	mm
SMBLX14	1/4	6.35	0.6
SMBLX38	3/8	9.53	0.7
SMBLX12	1/2	12.70	0.7
SMBLX58	5/8	15.88	0.8
SMBLX34	3/4	19.05	1.0



Screw type

Modle	For band width		Thickness
	Inch	mm	mm
SMBS14	1/4	6.35	1.5
SMBS38	3/8	9.53	1.8
SMBS12	1/2	12.70	2.0
SMBS58	5/8	15.88	2.5
SMBS34	3/4	19.05	2.5



Application Tools



SMBT001

Band Clamp Tool

SMBT002

Ratchet Tension Tool

SMBT003

Heavy Duty Tool

SMBT004

Ratchet Tensioner

SMBT005

Bantam Tool

Modle	Description	Weight
SMBT001	Band Clamp Tool for use with bands up to 3/4 "(19.05mm) wide	2.0kg
SMBT002	Ratchet Tension Tool for use with bands up to 3/4 "(19.05mm) wide, and also for all coated bands.	kg1.8kg
SMBT003	Heavy duty tool	2.3kg
SMBT004	Another type of ratchet tensioner for use with bands up to 3/4 "(19.05mm) wide and also for all coated bands.	1.8kg
SMBT005	It can be used with one hand. For using with bands up to 3/4 "(19.05mm) wide	1.5kg