

# A

## AERIAL ELECTRICAL FITTINGS



ANCHORING BRACKET	ANCHORING CLAMP	FUSE SWITCH DISCONNECTOR	SUSPENSION CLAMP	PRE-INSULATED SLEEVE	PRE-INSULATED BIMETAL LUG	FIXING NAIL	ANCHORING CLAMP	FIXING STEEL BELT	INSULATED PIERCING CONNECTOR	INSULATED PIERCING CONNECTOR (LIGHTING)	INSULATED PIERCING CONNECTOR (TRANSFORMATION)



### Anchoring clamp



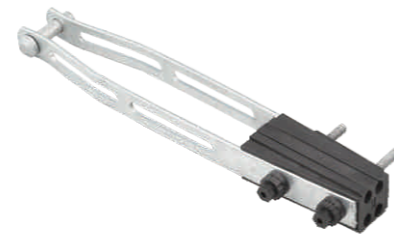
NES-B1



NES-B2



NES-B3



NES-B4

Material: Mild steel, nylon plus fiber glass

Product property: It is used to terminate 4-core of aerial bundle conductor. Its function is fixing and tightening the insulation conductor.

Mode	Conductor Cross-section(mm <sup>2</sup> )
NES-B1	4×(16-35)
NES-B2	4×(50-120)
NES-B3	4×(25-120)
NES-B4	4×(95-150)

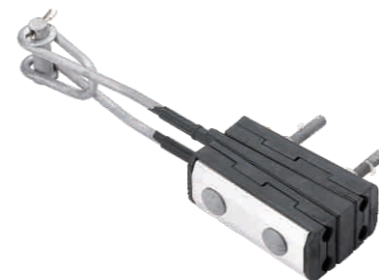
### Anchoring clamp



SM116



SM117



SM118

For the termination of 4-core LV ABC cable with hook fixing. The clamps have strong springs which keep the clamp in an open position during the installation of conductors. The clamping action functions through wedges. The body is made of weather resistant aluminium alloy and the plastic parts of special fibreglass reinforced plastic.

Mode	Conductor Cross-section(mm <sup>2</sup> )
SM116	4×(25-35)
SM117	4×(50-120)
SM118	4×(50-120)

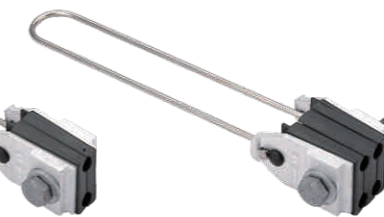
### Anchoring clamp



SM156



SM157



SM158

SM156, SM157 and SM158 used for the anchoring of a 2 or 4 core overhead cable to poles or walls by means of standard hooks.



SM160



SM161

Tension clamp for the anchoring of 2 or 4 core overhead cables to poles or walls by standard hooks. Tension clamp is equipped with a spring to make the installation easier.

Mode	Conductor Cross-section(mm <sup>2</sup> )
SM156	4×(16-25)
SM157	2×(16-25)
SM158	4×(16-25)
SM160	2×(16-25)
SM161	4×(16-25)

### Suspension clamp



SM130



SM140



SM136

Used for the installation and suspension of LV ABC cables to poles with standard hook attachment. For straight lines and angles up to 30° 4×(25-120 mm<sup>2</sup>) and 60° 4×(25-50). Thanks to the integrated construction, no extra parts are needed for the installation. The body is made of corrosion proof aluminium and the inserts of weather resistant plastic.

Light duty clamp for the installation and suspension of 4-core LV ABC cables to poles with standard hook attachment. For straight lines and angles up to 30° . Thanks to the integrated construction, no extra parts are needed for the installation. The body is made of corrosion proof aluminium and the inserts of weather resistant plastic.

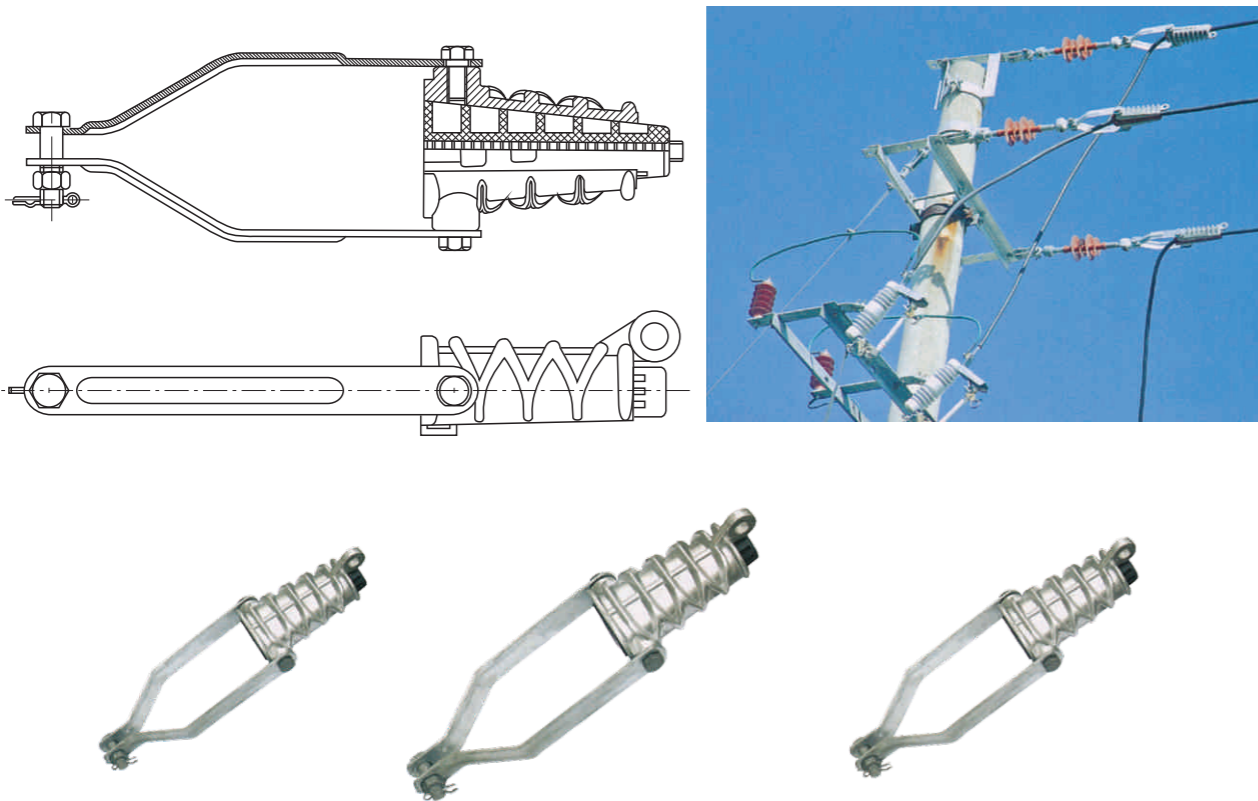
For the installation and suspension of 4-core LV ABC cables to poles with standard hook attachment. For straight lines and angles up to 90° . No extra parts are needed for the installation.

Mode	Conductor Range
SM130	2-4× (25-50) ≤60° / 2-4× (25-120) ≤30°
SM140	2-4× (25-120) ≤30°
SM136	2-4× (25-120) ≤90°

NEJ Wedge strain clamps for insulation cable

Application

This series are mainly used in 20kV or less than 10kV distribution system to fix and tighten the aluminum insulating wires at the corner or the end of the insulators on the stilt.



Technical Data

Modle	Applicable conductor(mm <sup>2</sup> )			Inner clamping range	Grip strength(kN)	Failure load(kN)
	1kV	10kV	20kV			
NEJ-1	35	-	-	Φ10~Φ11	3.4	12.4
	50	16	-	Φ12~Φ13	4.6	
	70	25	-	Φ14~Φ15	6.7	
	95	35	-	Φ15~Φ17	8.9	
NEJ-2	120	50~70	25~35	Φ16~Φ18.5	11.3	20.8
	150	95	50	Φ19.00~Φ21	13.7	
NEJ-3	185	120	70	Φ21.0~Φ23	17.3	32.0
NEJ-4	240	150	95	Φ23~Φ25.6	22.5	41.7
		185	120	Φ24~Φ26	22.5	
		240	150	Φ26~Φ27.5	22.5	
NEJ-5	-	300	185~240	Φ27.5~Φ31.5	22.5	52.1
				Φ27.5~Φ31.5	28.2	

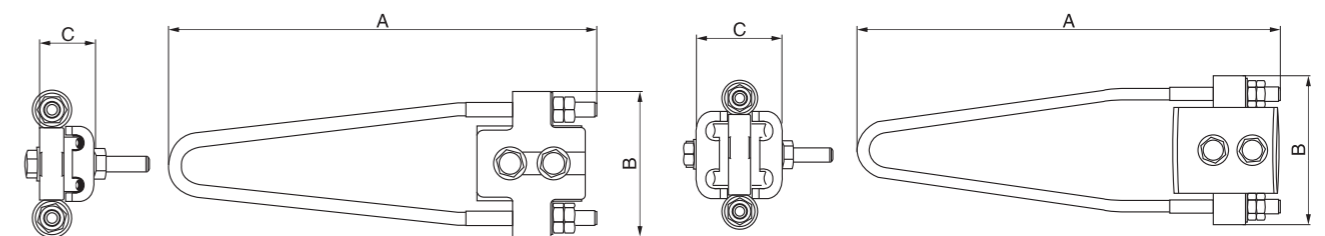
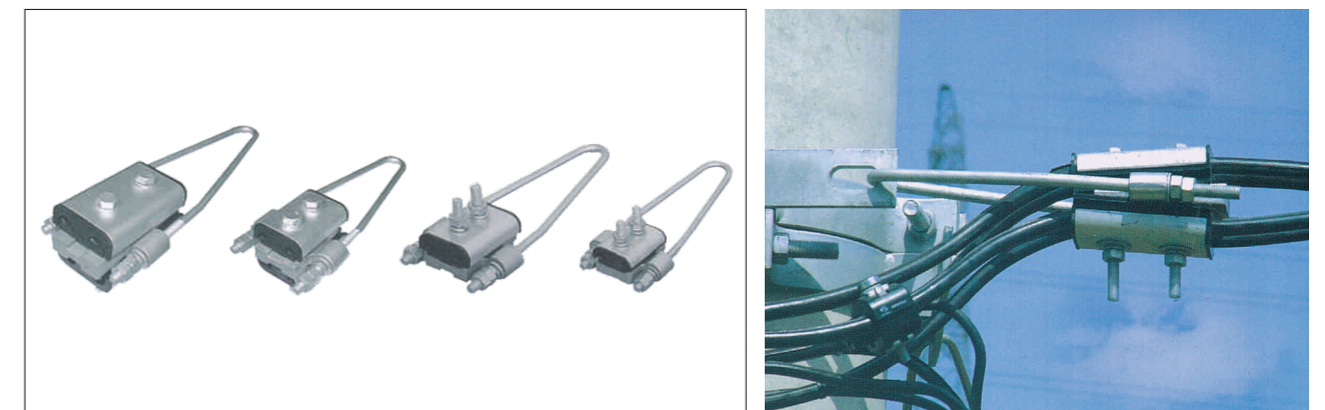
JNS Four(two)-core bunched cable strain clamp series

Application

JNS series four-core bunched cable strain clamp series are fully used for fixing or tightening 1kV and less than 1kV overhead four(two)-cores bunched cable at ends of circuit.

Function and Features

1. It adopts four(two)-core paralld groove paralld gap structure. Put the four insulation cables into clamp according to circuit design without peeling off the coat, then tighten the bolt to bunch it.
2. For inner block and filling pole with high strength, anti-climate resistance insulation plastic, it can be used for a long term;
3. Adopting wedge type self-tighten structure, after tightening the ring, it will be fixing, and get a quite big grasp strength.



JNS two-core bunched cable strain clamp series

JNS four-core bunched cable strain clamp series

Technical Data

Modle	Applicable Voltage(kV)	Applicable conductor(mm <sup>2</sup> )	Dimensions(mm)			Note
			A	B	C	
JNS-1A-1	1kV	4×10-4×16mm <sup>2</sup>	200	78	45	Four cores
JNS-1A-2		4×16-4×50mm <sup>2</sup>	260	100	62	
JNS-2A		4×50-4×120mm <sup>2</sup>	330	105	72	
JNS-1C	1kV	2×10-2×16mm <sup>2</sup>	200	78	30	Two cores
JNS-2C		2×16-2×50mm <sup>2</sup>	260	100	40	

Suspension clamp



SM94

SM95

1.1A

1.1B



ES54-14

PS1500



SHC-1

SHC-2

SHC-3

SHC-5

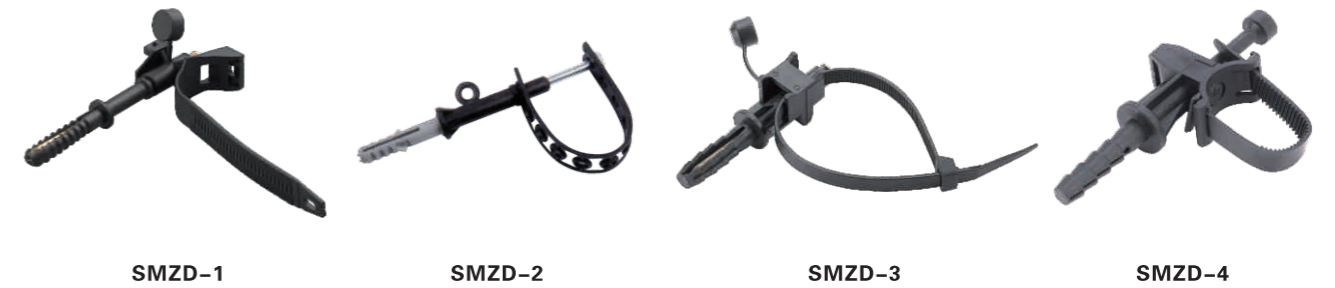
SHC-6

SHC-7

Product property: On poles, in alignment or angle, different level, also provide for hanging a public light bundle.

Model	Conductor Range
SM94	16-95
SM95	16-95
1.1A	16-95
1.1B	16-95
ES54-14	16-95
PS1500	16-95
SHC-1	4×(16-35)
SHC-2	4×(50-120)
SHC-3	4×(50-70)
SHC-4	4×(50-70)
SHC-5	4×(70-95)
SHC-6	4×(70-95)
SHC-7	4×(10-25)

Fixing nail



SMZD-1

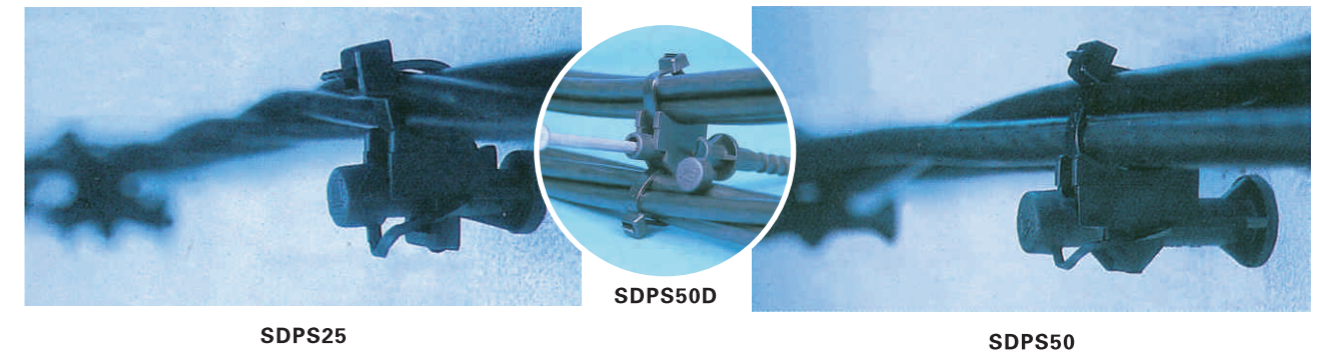
SMZD-2

SMZD-3

SMZD-4

It is in accordance with NFC 33-040

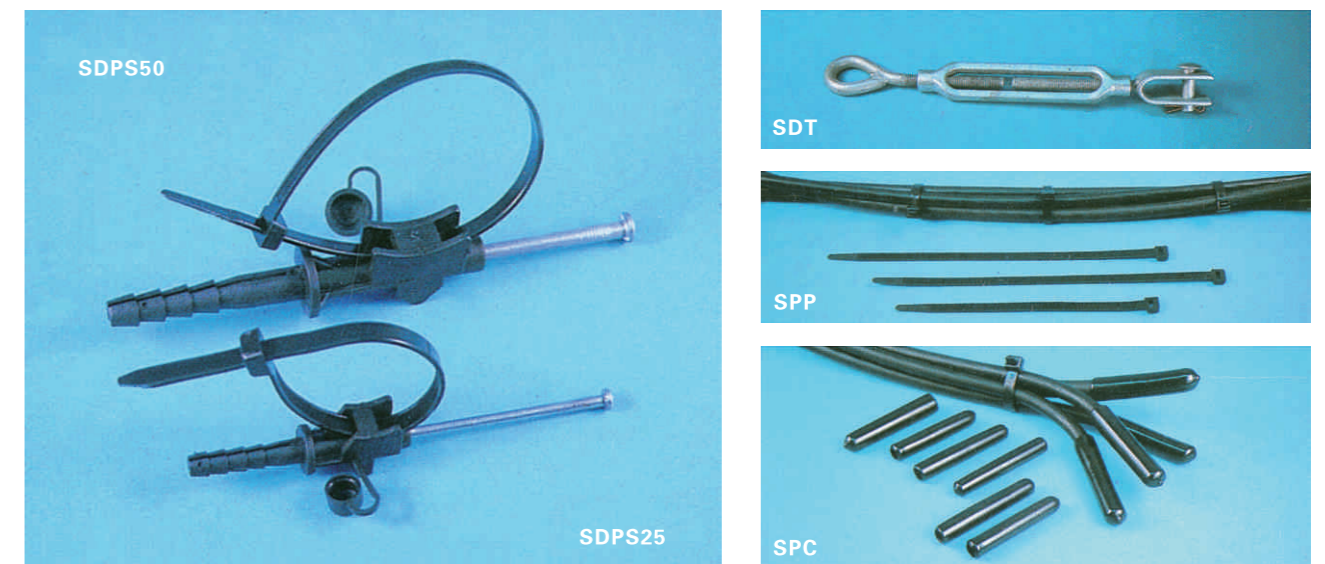
Model	Conductor Range(mm)
SMZD-1	15-47
SMZD-2	12-47
SMZD-3	15-47
SMZD-4	15-30



SDPS25

SDPS50D

SDPS50



SDPS50

SDT

SPP

SPC

SDPS25