

A

AERIAL ELECTRICAL FITTINGS



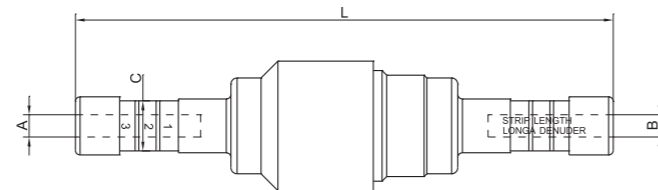
ANCHORING BRACKET	ANCHORING CLAMP	FUSE SWITCH DISCONNECTOR	SUSPENSION CLAMP	PRE-INSULATED SLEEVE	PRE-INSULATED BIMETAL LUG	FIXING NAIL	ANCHORING CLAMP	FIXING STEEL BELT	INSULATED PIERCING CONNECTOR	INSULATED PIERCING CONNECTOR (LIGHTING)	INSULATED PIERCING CONNECTOR (TRANSFORMATION)



Pre-insulated sleeve(with fuse)



MJPF



Modle	Cable Size (mm ²)		Plastic Sleeve Diameter(mm)	Length (mm)
	A	B		
MJPF 16/16	16	16	16.2	174.0
MJPF 16/25	16	25	16.2	174.0
MJPF 25/25	25	25	16.2	174.0

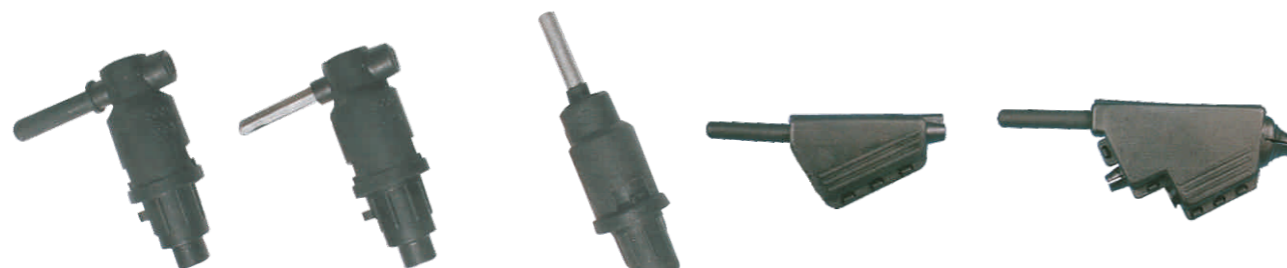
Material:Brass(silver plating) Aluminium

Product property: MJPF is designed to connect the neutral messenger in aerial bundled cable. It is in accordance with NFC33-021. The sleeve is with full tension.

And it's cap can prevent the water into the barrel. It is colored differently to distinguish the cable sizes.

Marked with type, cable size, die size, inner cable length and number of crimping.

Accessories



SDPA

SDPAD

SDPAV

SDCC

SDCC-R

Modle	Conductor Range(mm ²)	
	Type	mm ²
SDPA	Lateral isolation	-
SDPAD	Lateral skinned wire isolation	-
SDPAV	Vertical isolation	-
SDCC	Single	6/6
SDCC-R	Single	25/25
	Double	2 × 16+1 × 16

Anchoring bracket



SM81

SM82

SM83

Material: High strength aluminium alloy by casting
 Product property: Anchoring ABC cables with neutral messenger on poles (wood, concrete etc.....), Excellent in industrial and saline environment. Fixed by 2 × (14mm or 16mm) bolts or 2 stainless straps 0.75 × 20mm. It is in accordance with NFC 33-040.



SM96

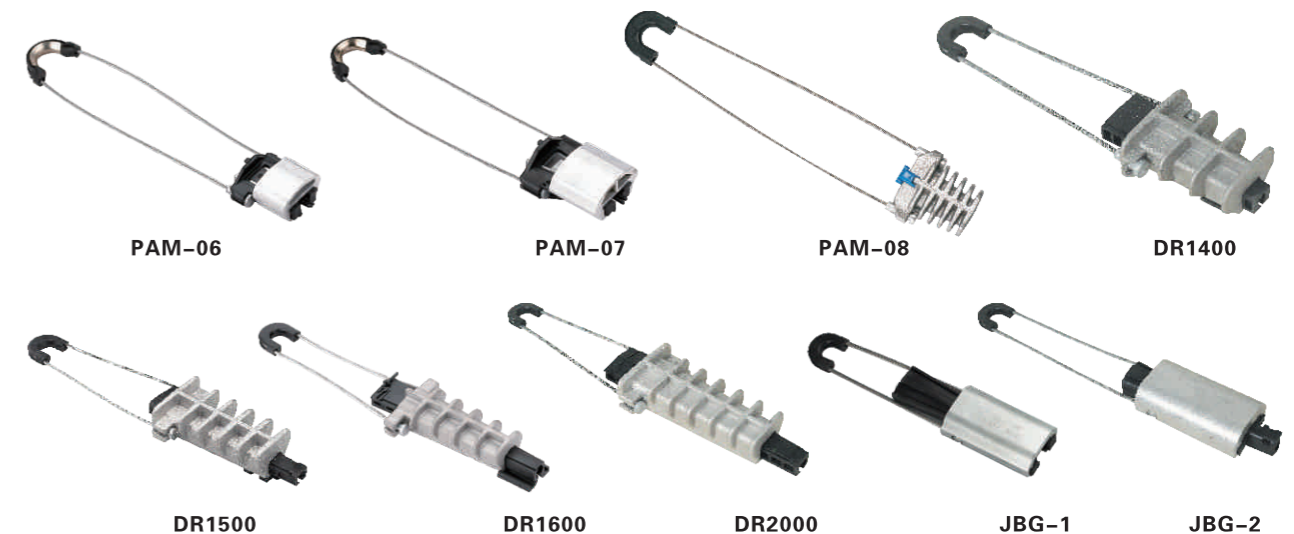
SM97

SM98

SM22

The universal hook SM96, SM97 and SM98 is used with bands in pole installations and with screws in wall installations. The hook is delivered without screws.

Anchoring clamp



PAM-06

PAM-07

PAM-08

DR1400

DR1500

DR1600

DR2000

JBG-1

JBG-2

Material: High strength aluminium alloy, nylon plus fiber glass, stainless steel

Product property: They are characterized by high mechanical stability, reduced dimensions for easier handling, high mechanical and climatic resistance. Cable gripping device in insulating material ensures the double insulation of the neutral core and avoids damage to sheath, secured parts, no tools required. Stainless steel bail with two marbles compressed on the end, this conception allows an easier locking on the body of the clamp. They are in accordance with NFC 33-041.

Modle	Cross-section(mm ²)
PAM-06	16-20
PAM-07	16-25
PAM-08	16-25
DR1400	25-35
DR1500	35-70
DR1600	35-70
DR2000	70-150
JBG-1	35-70
JBG-2	50-95

Anchoring clamp



STA STB STC STD LA1



LA2 DCR-1 DCR-2 DCR-3

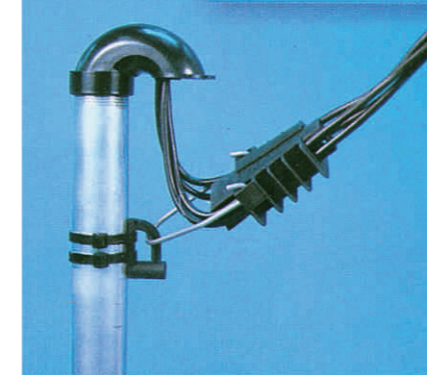
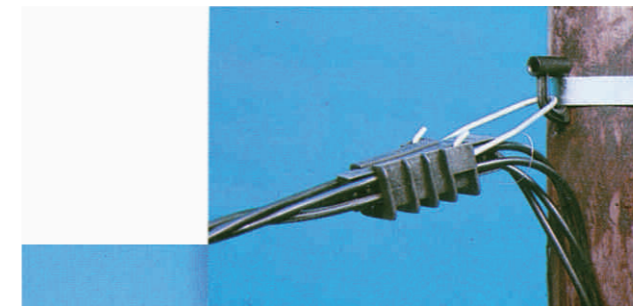


2.1 2.2 2.3 PA1500 PA2000

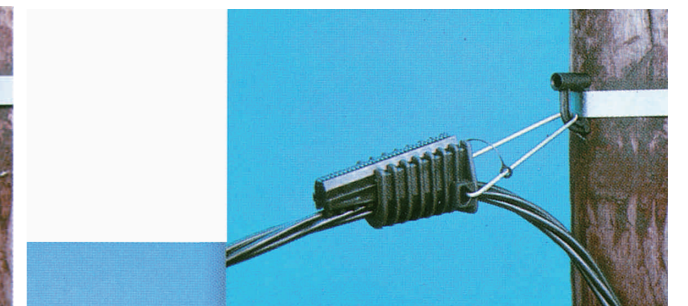
Material: Nylon plus fiber glass

Product property: They plastic anchoring clamp is suitable for insulated low-voltage ABC cable. It is also suitable for multiple conductors. Easy installation and perfect insulated function. It is in accordance with the NFC 33-042.

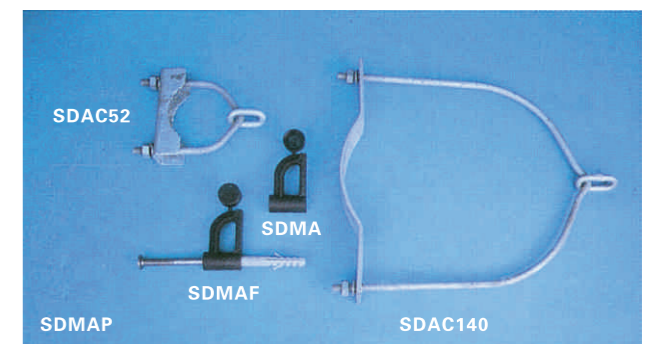
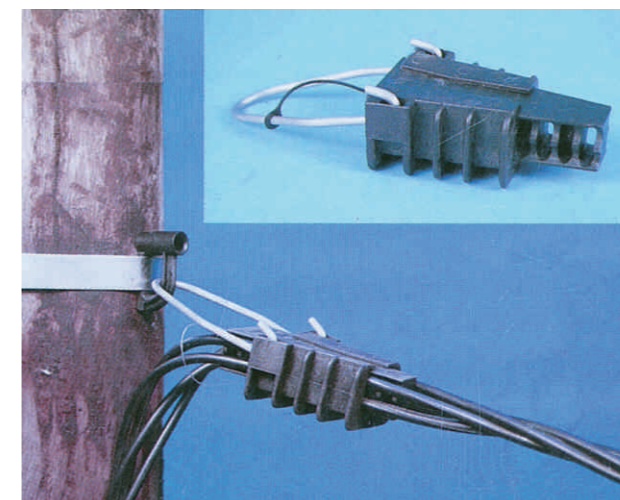
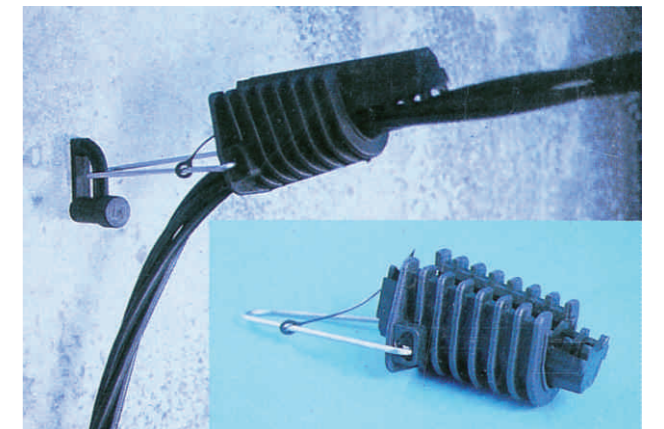
Mode	Cross-section(mm ²)
STA	1×10/1×16
STB	2×16/2×25
STC	4×16/4×25
STD	1×16/1×70
LA1	4×16/4×25
LA2	2×6/2×16
DCR-1	1×4/1×25
DCR-2	1×4/1×25
DCR-3	1×4/1×25
2.1	16-25
2.2	95-120
2.3	16-35
PA1500	25-50
PA2000	54.6-70



SKA-1

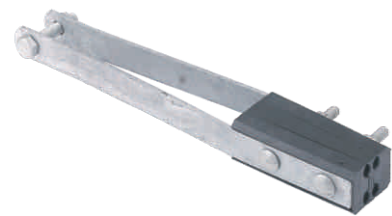


SKA-2



SDAC52 SDMA SDMAF SDAC140

Anchoring clamp



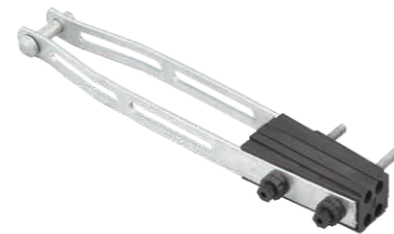
NES-B1



NES-B2



NES-B3



NES-B4

Material: Mild steel, nylon plus fiber glass

Product property: It is used to terminate 4-core of aerial bundle conductor. Its function is fixing and tightening the insulation conductor.

Mode	Conductor Cross-section(mm ²)
NES-B1	4×(16-35)
NES-B2	4×(50-120)
NES-B3	4×(25-120)
NES-B4	4×(95-150)

Anchoring clamp



SM116



SM117



SM118

For the termination of 4-core LV ABC cable with hook fixing. The clamps have strong springs which keep the clamp in an open position during the installation of conductors. The clamping action functions through wedges. The body is made of weather resistant aluminium alloy and the plastic parts of special fibreglass reinforced plastic.

Mode	Conductor Cross-section(mm ²)
SM116	4×(25-35)
SM117	4×(50-120)
SM118	4×(50-120)

Anchoring clamp



SM156



SM157



SM158

SM156, SM157 and SM158 used for the anchoring of a 2 or 4 core overhead cable to poles or walls by means of standard hooks.



SM160



SM161

Tension clamp for the anchoring of 2 or 4 core overhead cables to poles or walls by standard hooks. Tension clamp is equipped with a spring to make the installation easier.

Mode	Conductor Cross-section(mm ²)
SM156	4×(16-25)
SM157	2×(16-25)
SM158	4×(16-25)
SM160	2×(16-25)
SM161	4×(16-25)

Suspension clamp



SM130



SM140



SM136

Used for the installation and suspension of LV ABC cables to poles with standard hook attachment. For straight lines and angles up to 30° 4×(25-120 mm²) and 60° 4×(25-50). Thanks to the integrated construction, no extra parts are needed for the installation. The body is made of corrosion proof aluminium and the inserts of weather resistant plastic.

Light duty clamp for the installation and suspension of 4-core LV ABC cables to poles with standard hook attachment. For straight lines and angles up to 30° . Thanks to the integrated construction, no extra parts are needed for the installation. The body is made of corrosion proof aluminium and the inserts of weather resistant plastic.

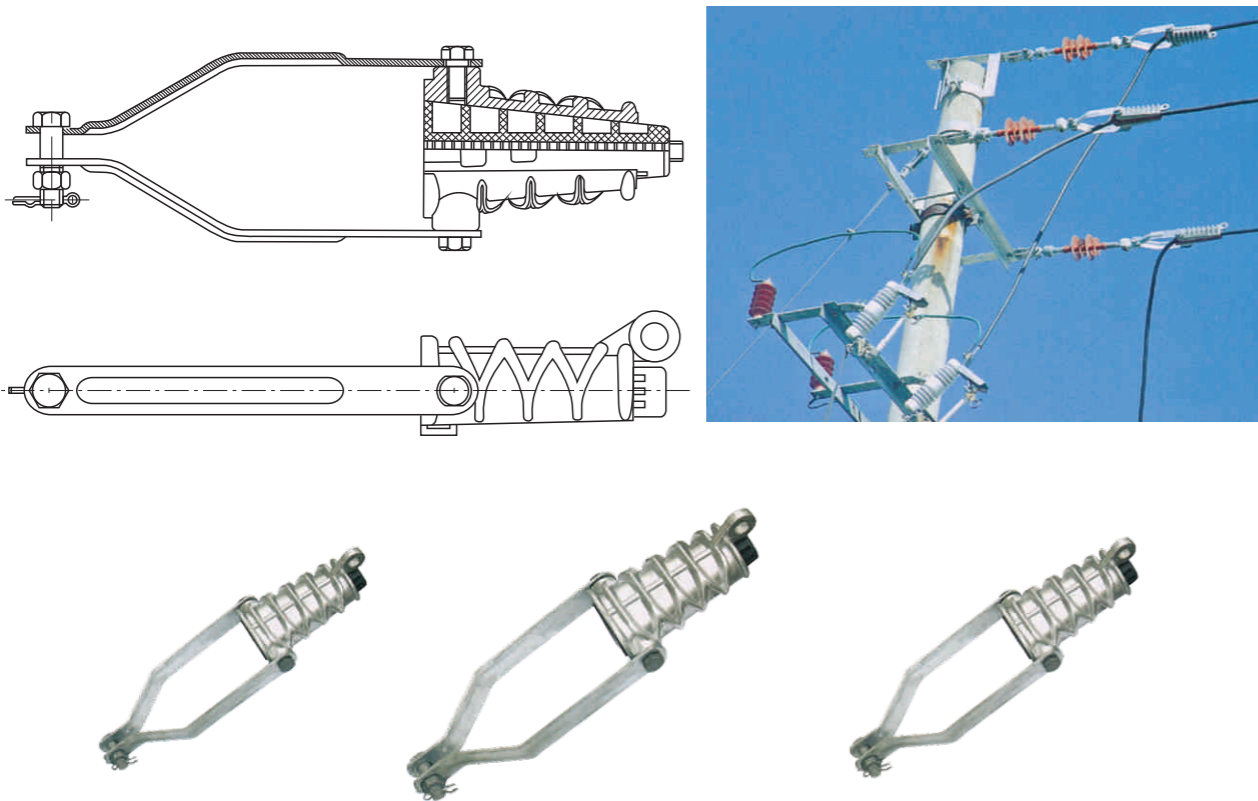
For the installation and suspension of 4-core LV ABC cables to poles with standard hook attachment. For straight lines and angles up to 90° . No extra parts are needed for the installation.

Mode	Conductor Range
SM130	2-4× (25-50) ≤60° / 2-4× (25-120) ≤30°
SM140	2-4× (25-120) ≤30°
SM136	2-4× (25-120) ≤90°

NEJ Wedge strain clamps for insulation cable

Application

This series are mainly used in 20kV or less than 10kV distribution system to fix and tighten the aluminum insulating wires at the corner or the end of the insulators on the stilt.



Technical Data

Modle	Applicable conductor(mm ²)			Inner clamping range	Grip strength(kN)	Failure load(kN)
	1kV	10kV	20kV			
NEJ-1	35	-	-	Φ10~Φ11	3.4	12.4
	50	16	-	Φ12~Φ13	4.6	
	70	25	-	Φ14~Φ15	6.7	
	95	35	-	Φ15~Φ17	8.9	
NEJ-2	120	50~70	25~35	Φ16~Φ18.5	11.3	20.8
	150	95	50	Φ19.00~Φ21	13.7	
NEJ-3	185	120	70	Φ21.0~Φ23	17.3	32.0
NEJ-4	240	150	95	Φ23~Φ25.6	22.5	41.7
		185	120	Φ24~Φ26	22.5	
		240	150	Φ26~Φ27.5	22.5	
NEJ-5	-	300	185~240	Φ27.5~Φ31.5	22.5	52.1
				Φ27.5~Φ31.5	28.2	

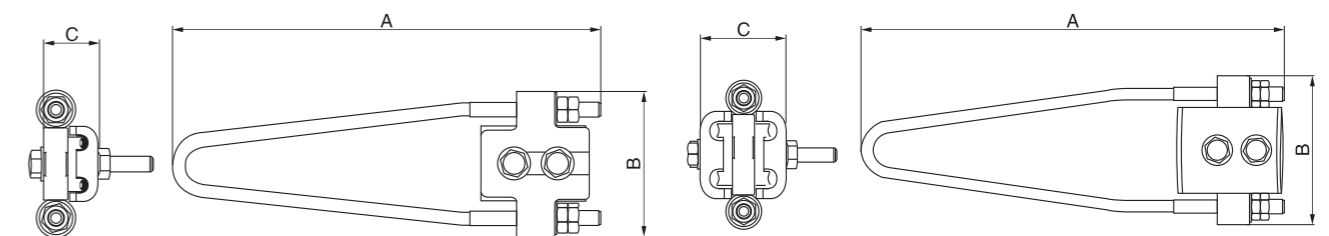
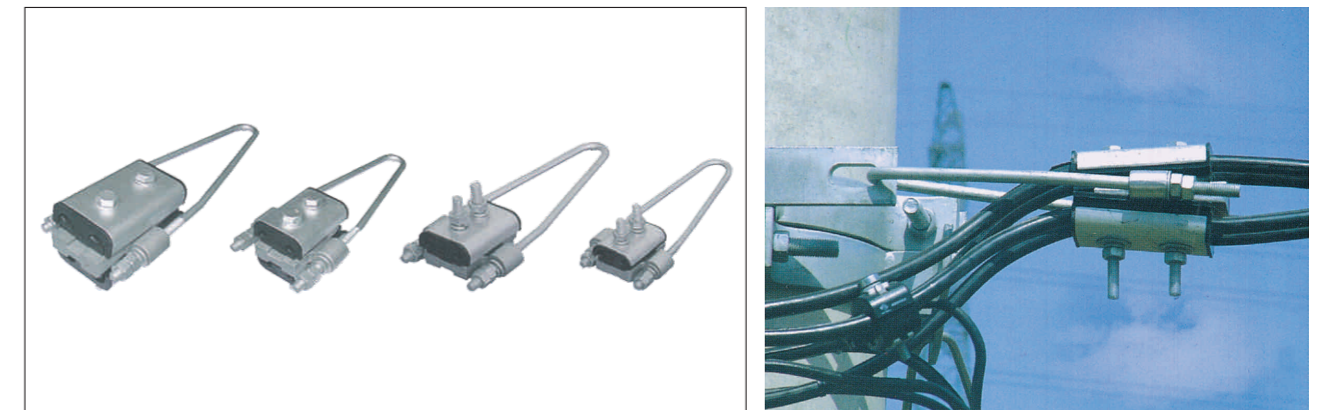
JNS Four(two)-core bunched cable strain clamp series

Application

JNS series four-core bunched cable strain clamp series are fully used for fixing or tightening 1kV and less than 1kV overhead four(two)-cores bunched cable at ends of circuit.

Function and Features

1. It adopts four(two)-core paralld groove paralld gap structure. Put the four insulation cables into clamp according to circuit design without peeling off the coat, then tighten the bolt to bunch it.
2. For inner block and filling pole with high strength, anti-climate resistance insulation plastic, it can be used for a long term;
3. Adopting wedge type self-tighten structure, after tightening the ring, it will be fixing, and get a quite big grasp strength.



JNS two-core bunched cable train clamp series

JNS four-core bunched cable train clamp series

Technical Data

Modle	Applicable Voltage(kV)	Applicable conductor(mm ²)	Dimensions(mm)			Note
			A	B	C	
JNS-1A-1	1kV	4×10-4×16mm ²	200	78	45	Four cores
JNS-1A-2		4×16-4×50mm ²	260	100	62	
JNS-2A		4×50-4×120mm ²	330	105	72	
JNS-1C	1kV	2×10-2×16mm ²	200	78	30	Two cores
JNS-2C		2×16-2×50mm ²	260	100	40	