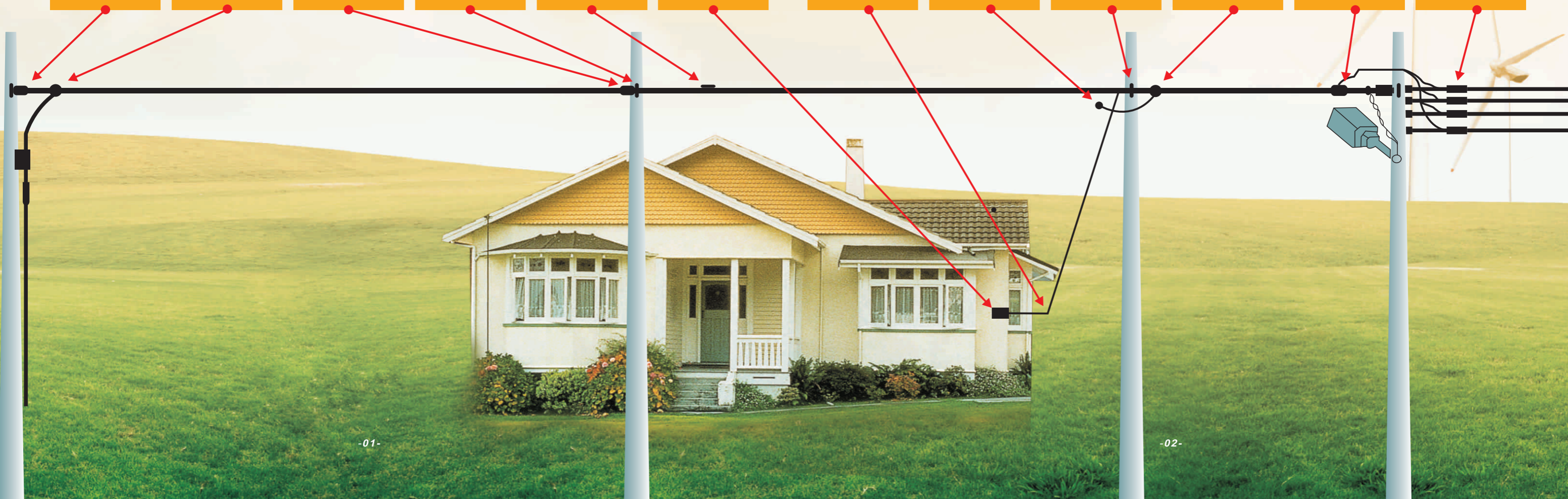


A

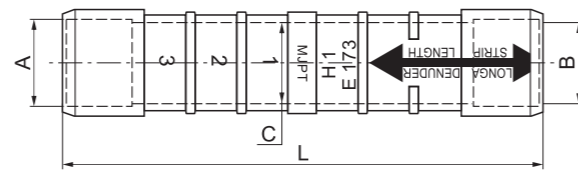
AERIAL ELECTRICAL FITTINGS



Pre-insulated sleeve



MJPT



Modle	Cable Size (mm ²)		Plastic Sleeve Diameter(mm)	Length (mm)
	A	B		
MJPT 16/16	16	16	20	70
MJPT 25/25	25	25	20	70
MJPT 35/35	35	35	20	98.5
MJPT 50/50	50	50	20	98.5
MJPT 70/70	70	70	20	98.5
MJPT 95/95	95	95	25	135
MJPT 120/120	120	120	25	150

Material: Aluminum alloy

Product property: MJPT is designed to connect the insulated cable (include ABC cable) in aerial distribution network. It is in accordance with NFC33-021. The sleeve is with some tension.

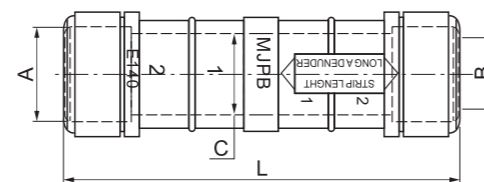
And its cap can prevent the water into the barrel. It is colored differently to distinguish the cable sizes.

Marked with type, cable size, die size, inner cable length and number of crimping.

Pre-insulated sleeve



MJPB



Modle	Cable Size (mm ²)		Plastic Sleeve Diameter(mm)	Length (mm)
	A	B		
MJPB 6/16	6	16	16	73.5
MJPB 10/16	10	16	16	73.5
MJPB 16/16	16	16	16	73.5
MJPB 16/25	16	25	16	73.5
MJPB 25/25	25	25	16	73.5

Material: Al-99.5%

Product property: MJPB is designed to connect the insulated cable (include ABC cable). It is in accordance with NFC33-021. The sleeve is without tension.

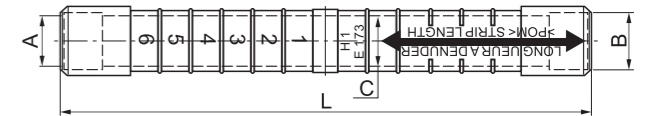
And its cap can prevent the water into the barrel. It is colored differently to distinguish the cable size.

Marked with type, cable size, die size, inner cable length and number of crimping.

Pre-insulated sleeve



MJPTN



Modle	Cable Size (mm ²)		Plastic Sleeve Diameter(mm)	Length (mm)
	A	B		
MJPTN 54.6/54.6	54.6	54.6	20	172.5
MJPTN 54.6/70	54.6	70	20	172.5
MJPTN 70/70	70	70	20	172.5
MJPTN 95/95D	95	95	25	172.5

Material: Aluminum alloy

Product property: MJPTN is designed to connect the neutral messenger in aerial bundled cable. It is in accordance with NFC33-021. The sleeve is with full tension.

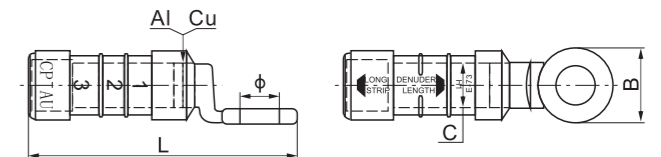
And its cap can prevent the water into the barrel. It is colored differently to distinguish the cable sizes.

Marked with type, cable size, die size, inner cable length and number of crimping.

Pre-insulated bimetal lug



CPTAU



Modle	Dimensions(mm)			Length(mm)
	C	B	φ	
CPTAU 16-10	16	20	10.5	73
CPTAU 25-12	20	24	13	98.5
CPTAU 35-12	20	24	13	98.5
CPTAU 50-12	20	24	13	98.5
CPTAU 54.6-12	20	24	13	98.5
CPTAU 70-12	20	24	13	98.5
CPTAU 95-12	20	24	13	98.5
CPTAU120-12	23	30	13	125
CPTAU150-12	23	30	13	125
CPTAU180-12	32	35	13	145
CPTAU240-12	32	35	13	145

Material: E-Cu; Al-99.6%

Product property: CPTAU is designed to connect the insulated cable (include ABC cable). It is in accordance with NFC33-021.

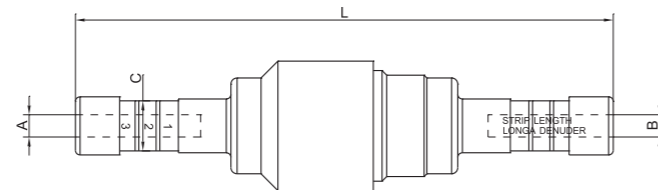
The waterproof cap can prevent the water into the barrel. It is colored differently to distinguish the cable sizes.

Marked with type, cable size, die size, inner cable length and number of crimping.

Pre-insulated sleeve(with fuse)



MJPF



Modle	Cable Size (mm ²)		Plastic Sleeve Diameter(mm)	Length (mm)
	A	B		
MJPF 16/16	16	16	16.2	174.0
MJPF 16/25	16	25	16.2	174.0
MJPF 25/25	25	25	16.2	174.0

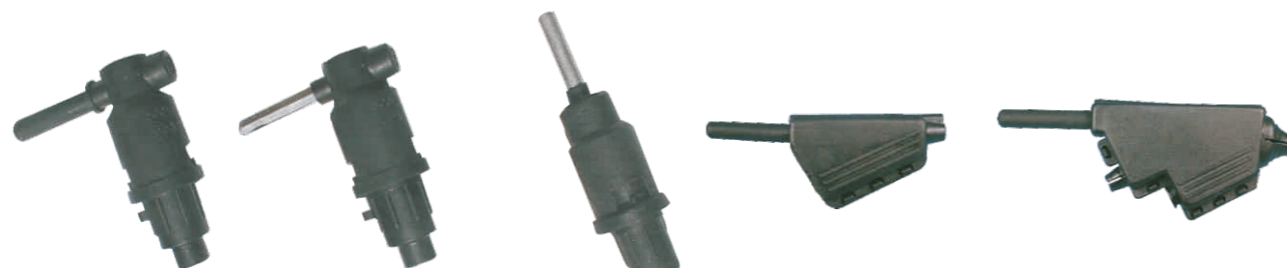
Material:Brass(silver plating) Aluminium

Product property: MJPF is designed to connect the neutral messenger in aerial bundled cable. It is in accordance with NFC33-021. The sleeve is with full tension.

And it's cap can prevent the water into the barrel. It is colored differently to distinguish the cable sizes.

Marked with type, cable size, die size, inner cable length and number of crimping.

Accessories



SDPA

SDPAD

SDPAV

SDCC

SDCC-R

Modle	Conductor Range(mm ²)	
	Type	mm ²
SDPA	Lateral isolation	-
SDPAD	Lateral skinned wire isolation	-
SDPAV	Vertical isolation	-
SDCC	Single	6/6
SDCC-R	Single	25/25
	Double	2 × 16+1 × 16

Anchoring bracket



SM81

SM82

SM83

Material: High strength aluminium alloy by casting
Product property: Anchoring ABC cables with neutral messenger on poles (wood, concrete etc.....), Excellent in industrial and saline environment. Fixed by 2 × (14mm or 16mm) bolts or 2 stainless straps 0.75 × 20mm. It is in accordance with NFC 33-040.



SM96

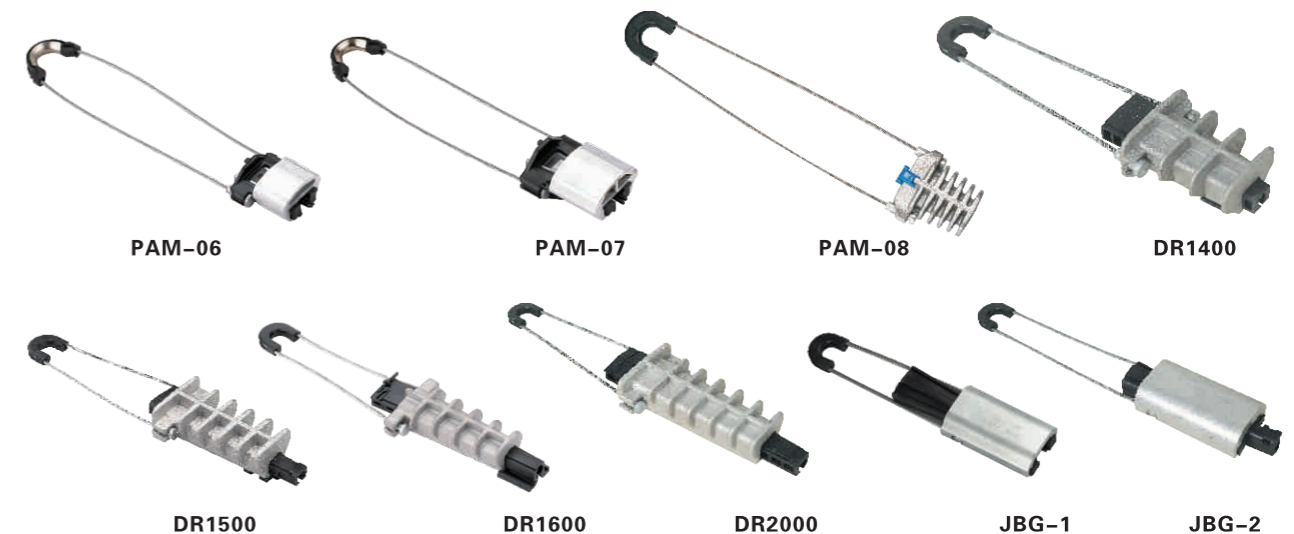
SM97

SM98

SM22

The universal hook SM96, SM97 and SM98 is used with bands in pole installations and with screws in wall installations. The hook is delivered without screws.

Anchoring clamp



PAM-06

PAM-07

PAM-08

DR1400

DR1500

DR1600

DR2000

JBG-1

JBG-2

Material: High strength aluminium alloy, nylon plus fiber glass, stainless steel

Product property: They are characterized by high mechanical stability, reduced dimensions for easier handling, high mechanical and climatic resistance. Cable gripping device in insulating material ensures the double insulation of the neutral core and avoids damage to sheath, secured parts, no tools required. Stainless steel bail with two marbles compressed on the end, this conception allows an easier locking on the body of the clamp. They are in accordance with NFC 33-041.

Modle	Cross-section(mm ²)
PAM-06	16-20
PAM-07	16-25
PAM-08	16-25
DR1400	25-35
DR1500	35-70
DR1600	35-70
DR2000	70-150
JBG-1	35-70
JBG-2	50-95